

# *ActTrade* ...

## Newsletter and Charts

---

This report is prepared by Alan Hull an authorised representative of Gryphon Learning, holder of Australian Financial Services Licence No. 246606. It is published in good faith based on the facts known at the time of preparation and does not purport to contain all relevant information in respect of the securities to which it relates (Securities).

Alan Hull has prepared this report for multiple distribution and without consideration to the investment objectives, financial situation or particular needs (Objectives) of any individual investor. Accordingly, any advice given is not a recommendation that a particular course of action is suitable for any particular person and is not suitable to be acted on as investment advice. Readers must assess whether the advice is appropriate to their Objectives before making an investment decision on the basis of this report.

Neither Gryphon Learning Pty Ltd nor Alan Hull warrant or represent the accuracy of the contents of the report. Any persons relying on the information do so at their own risk. Except to the extent that liability under any law cannot be excluded, Gryphon Learning Pty Ltd and Alan Hull disclaim liability for all loss or damage arising as a result of an opinion, advice, recommendation, representation or information expressly or impliedly published in or in relation to this report notwithstanding any error or omission including negligence.

Please note that Gryphon Learning Pty Ltd or its employees or associates, ActVest Pty Ltd or its employees or associates and Alan Hull may have interests in the financial products referred to in this document.

None of Gryphon Learning, its Authorised Representatives, the “Gryphon System”, “Gryphon MultiMedia”, and “Gryphon Scanner” take into account the investment objectives, financial situation and particular needs of any particular person and before making an investment decision on the basis of the “Gryphon System”, “Gryphon MultiMedia” and “Gryphon Scanner” or any of its authorised representatives, a prospective investor needs to consider with or without the assistance of a securities adviser, whether the advice is appropriate in the light of the particular investment needs, objectives and financial circumstances of the prospective investor.

---

### **Information Policy**

The formulas used to create the information contained in this document are strictly confidential. *ActVest P/L* constantly reviews and updates these formulas to ensure the best possible service to its Subscribers. Alan Hull, through his books and seminars, provides working equivalents to these formulas to both the general public and third party product vendors, without updates. A practical explanation for the use of the equivalent formulas can be found in Alan Hull's books.

### **©Copyright 2011**

This document is copyright. This document, in part or whole, may not be reproduced or transmitted in any form or by any means, electronic, mechanical, photocopying, recording, scanning or otherwise without prior written permission. This document is protected by finger printing identification and can be traced back to the original recipient. Copyright infringement is a criminal offence and will always be reported.

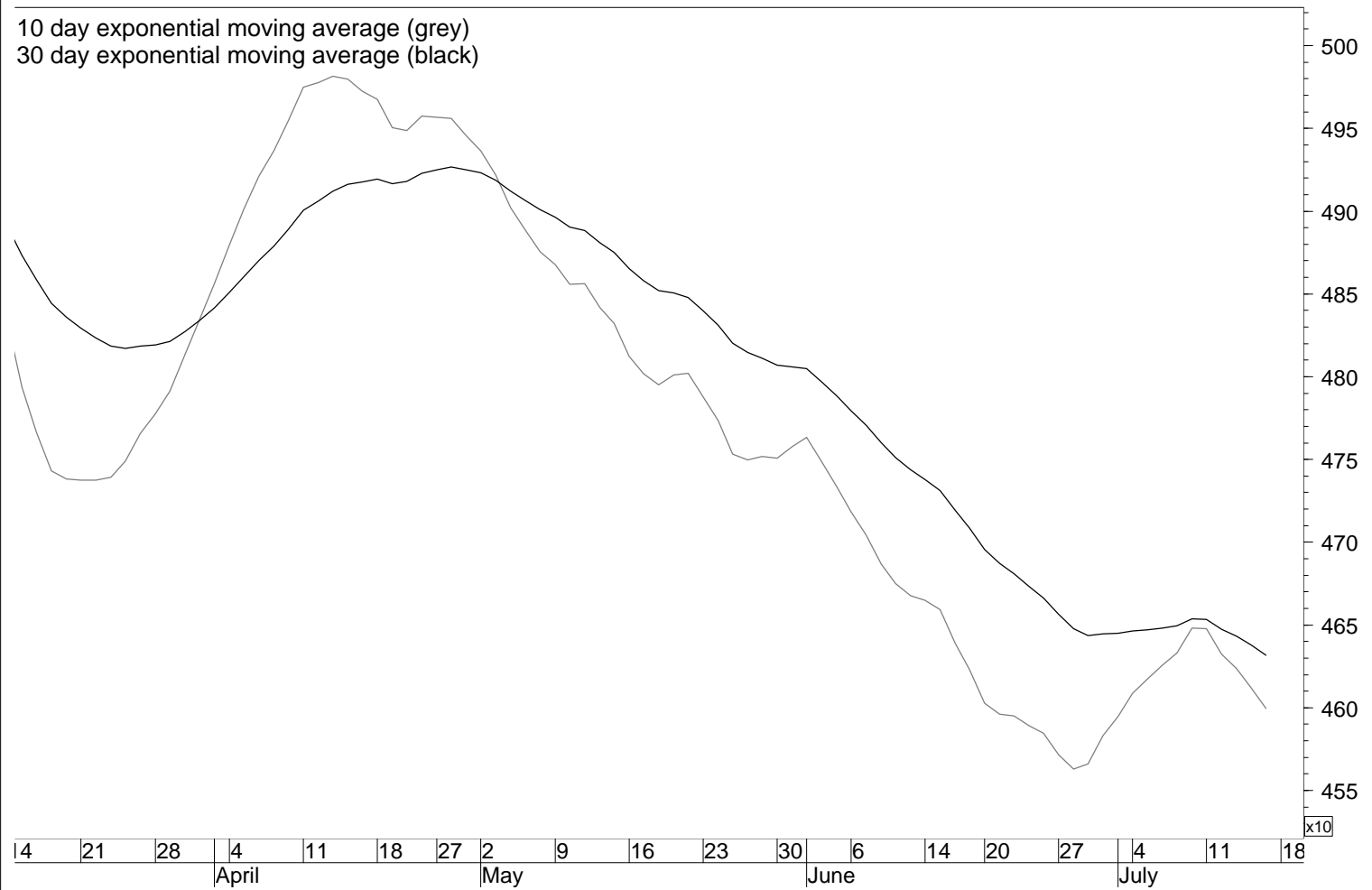
### **ActTrade Newsletter Availability**

The ActTrade Newsletter is available for download from the member's website [www.acttrade.net](http://www.acttrade.net) each weekend. When the Newsletter is posted to the website, an email is sent to all subscribers with a link direct to the website. **Please note that if you do not receive the weekly reminder email, you can still download the Newsletter by going straight to the website and entering your access details.** Please also note that the Newsletter will always be available by midday on the Sunday unless otherwise notified.

# Bourse Bulletin

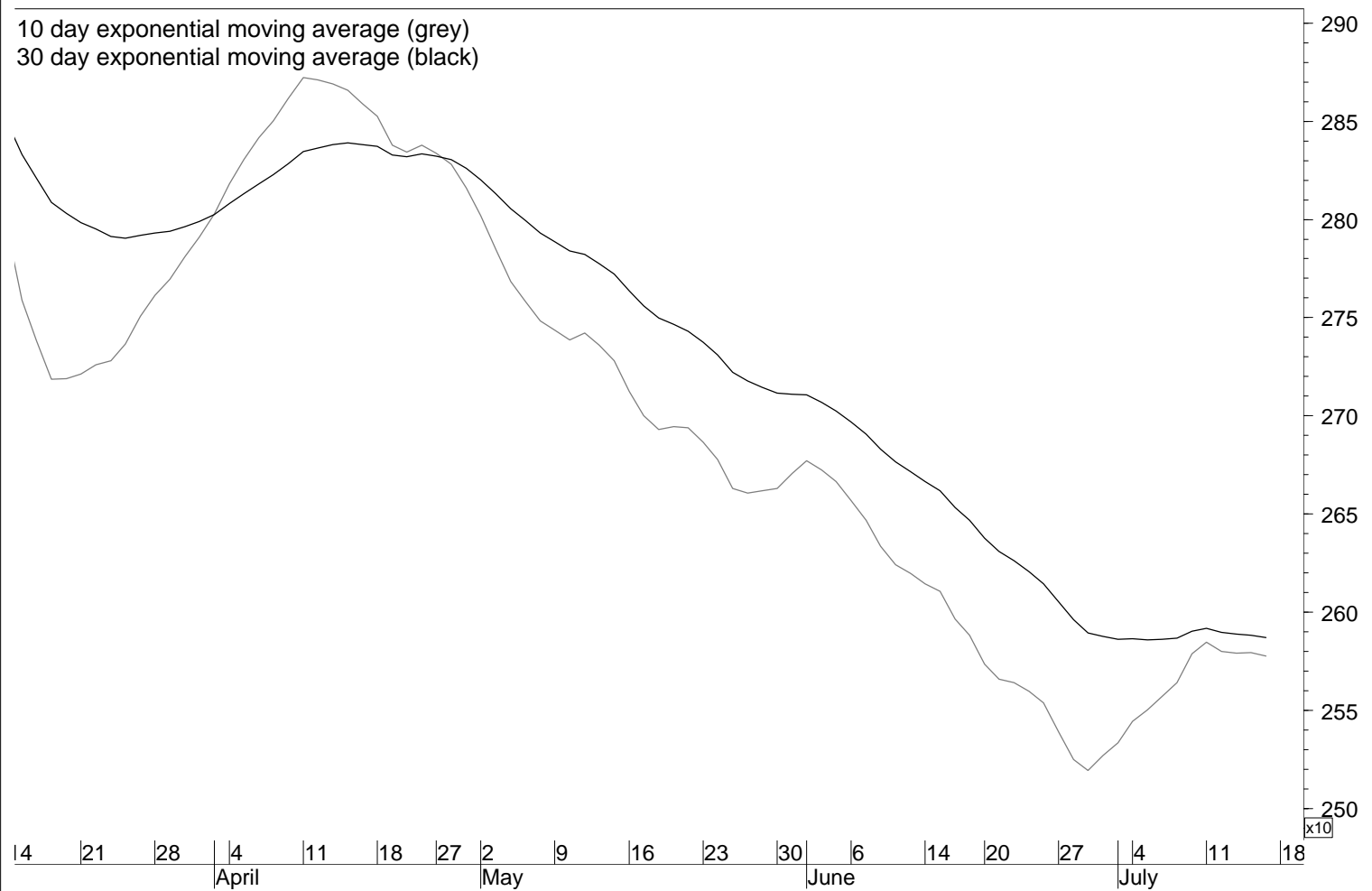
## 1 - Daily Chart - All Ords I ASX

10 day exponential moving average (grey)  
30 day exponential moving average (black)



## 2 - Daily Chart - SP/ASXSmlOrdIASX

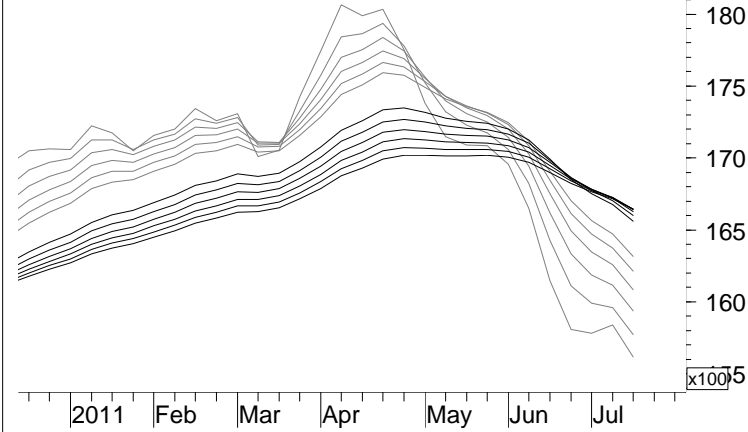
10 day exponential moving average (grey)  
30 day exponential moving average (black)



# GICS Industry Group Analysis Charts

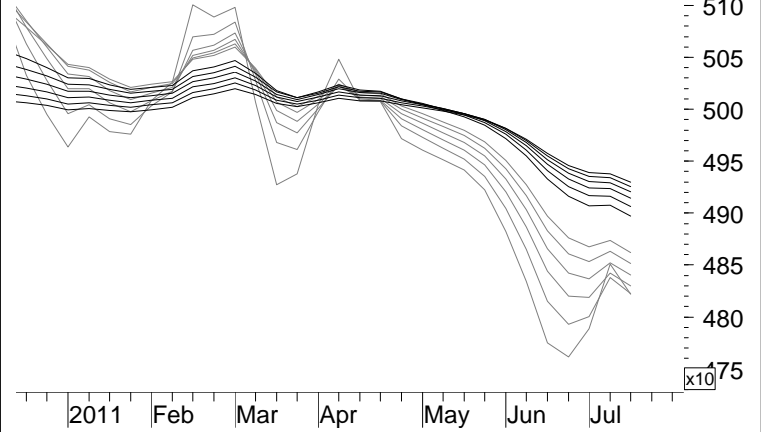
01 - Energy G3I ASX

AT Sector ROR % (-45.1271)



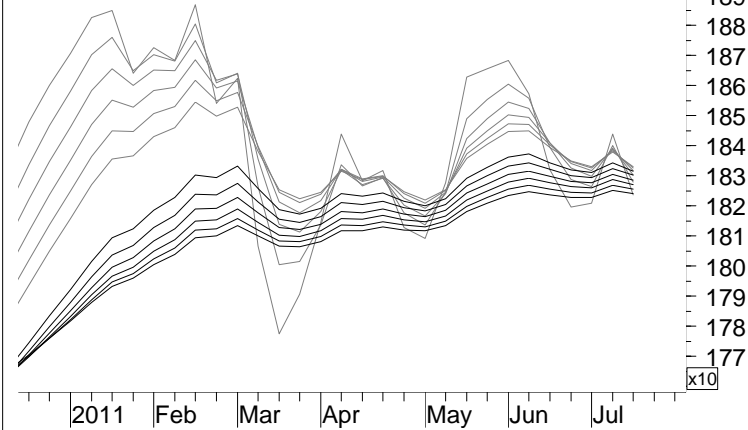
02 - Transport G3IASX

AT Sector ROR % (-17.7389)



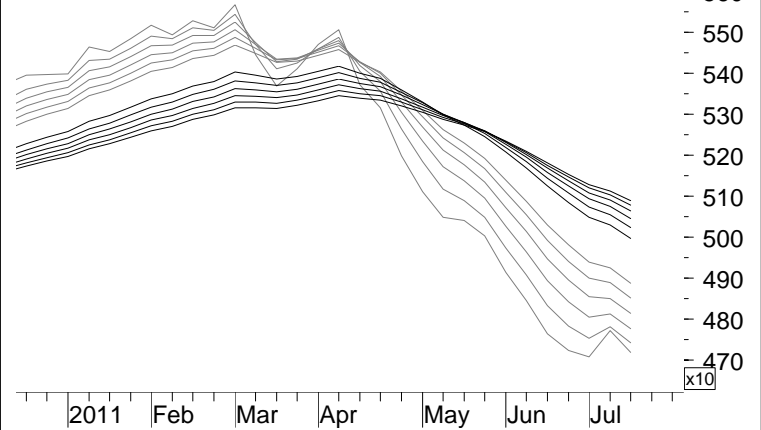
03 - ComSer&SupG3IASX

AT Sector ROR % (3.82223)



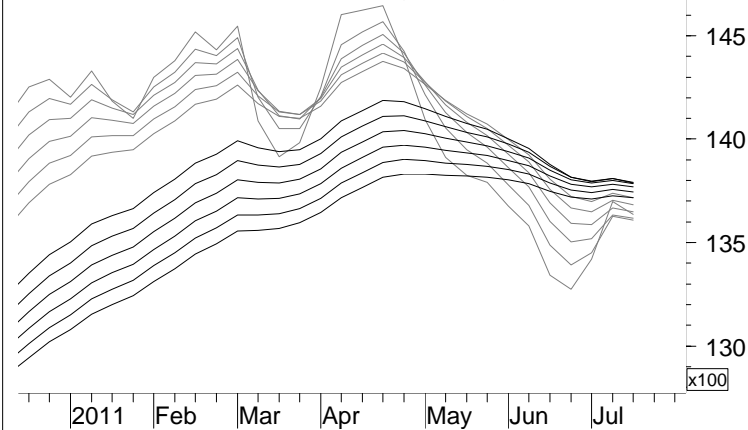
04 - Cap Goods G3IASX

AT Sector ROR % (-73.4331)



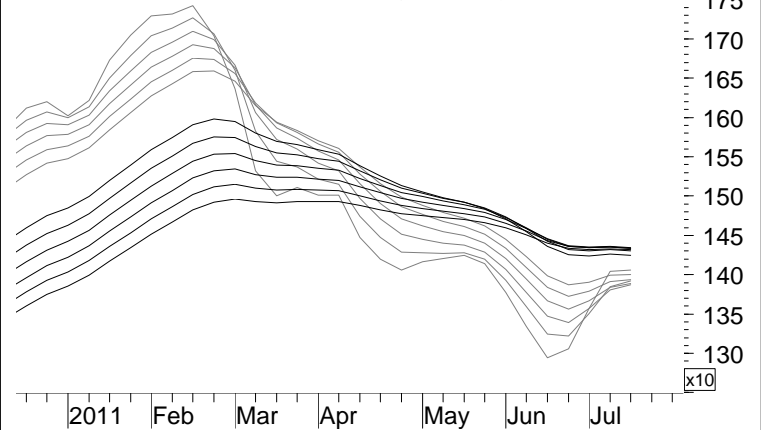
05 - Materials G3IASX

AT Sector ROR % (-30.2671)



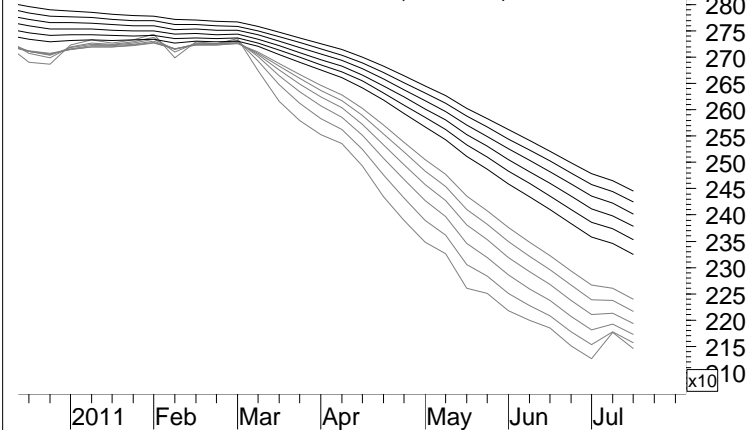
06 - Auto&Comp G3IASX

AT Sector ROR % (-69.5274)



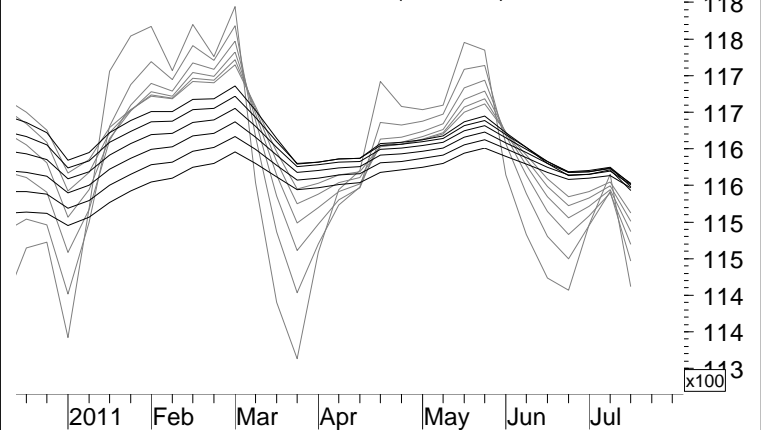
07 - ConDur&AppG3I

AT Sector ROR % (-99.1423)



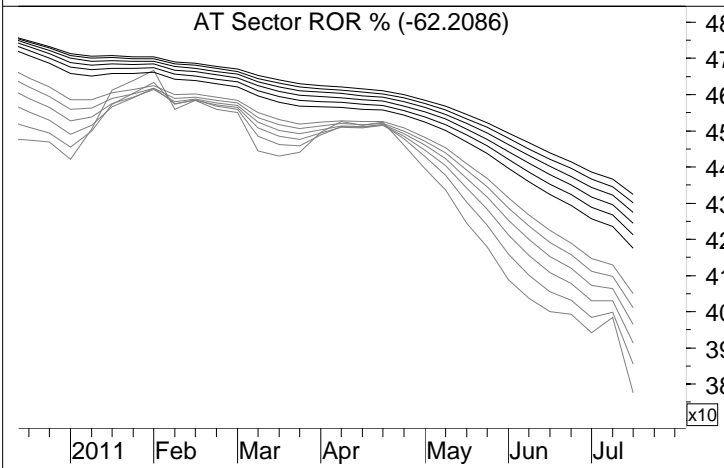
08 - Food&DrugG3I ASX

AT Sector ROR % (-0.92723)

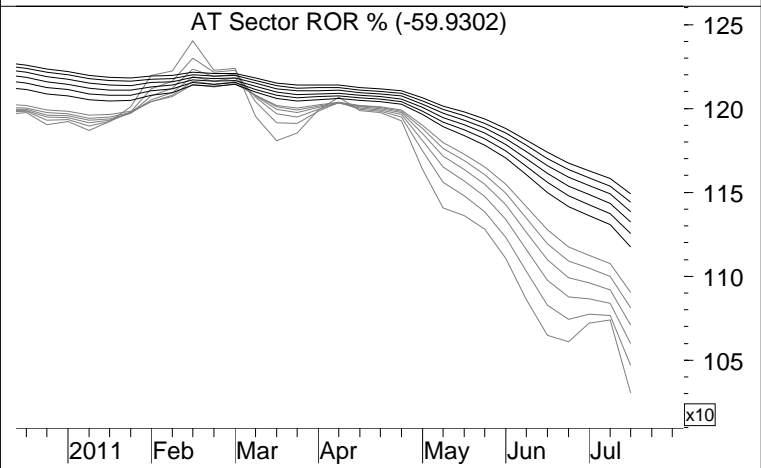


# GICS Industry Group Analysis Charts

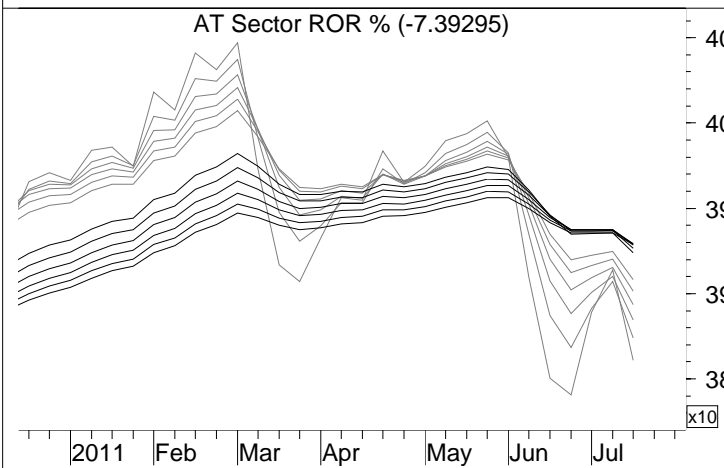
09 - RetailingG3I ASX



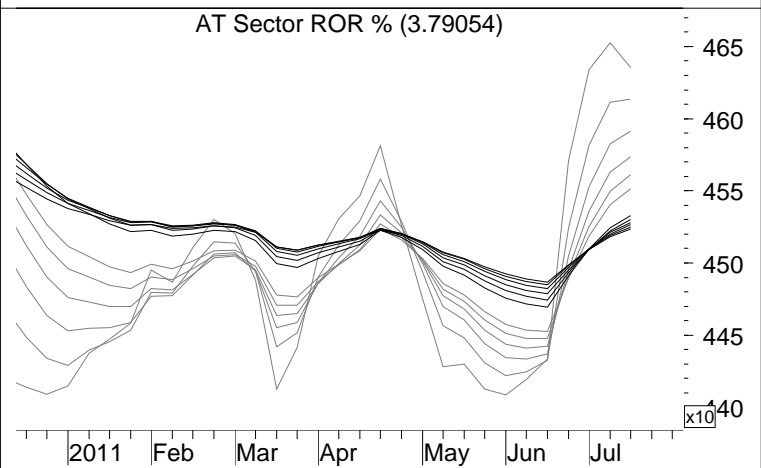
10 - Media G3I ASX



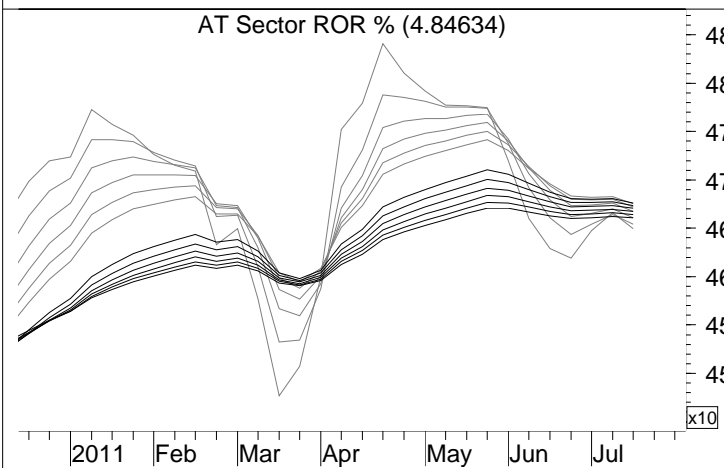
11 - HotelsR&LG3I ASX



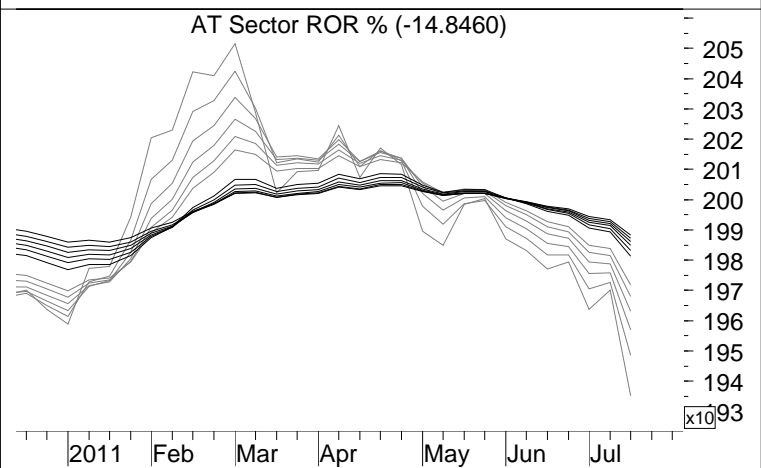
12 - FoodBev&TG3I ASX



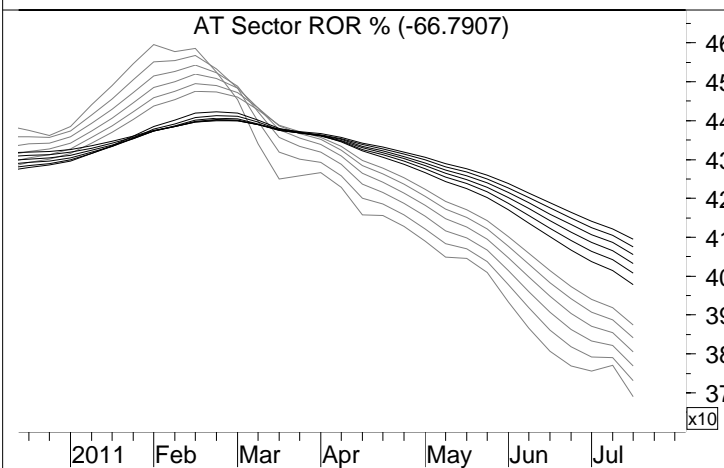
13 - HealthE&SG3I ASX



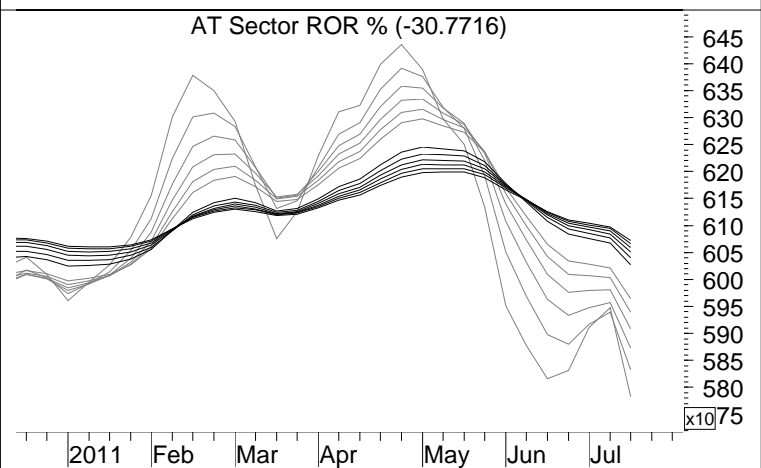
14 - RealEstateG3IASX



15 - DiverseFinG3IASX

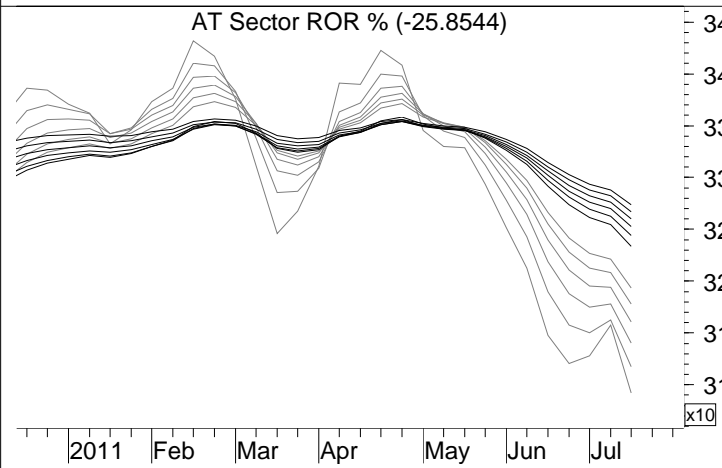


16 - Banks G3I ASX

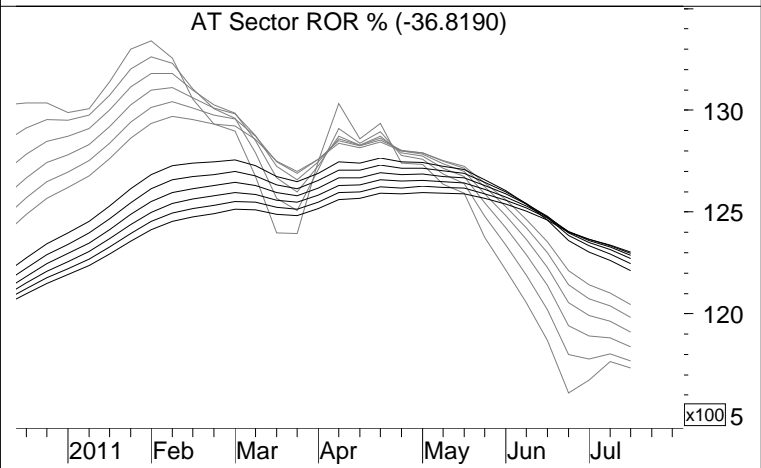


# GICS Industry Group Analysis Charts

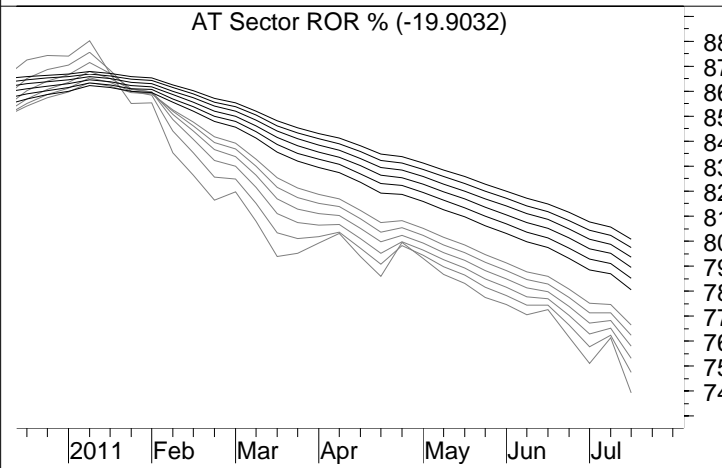
17 - InsuranceG3I ASX



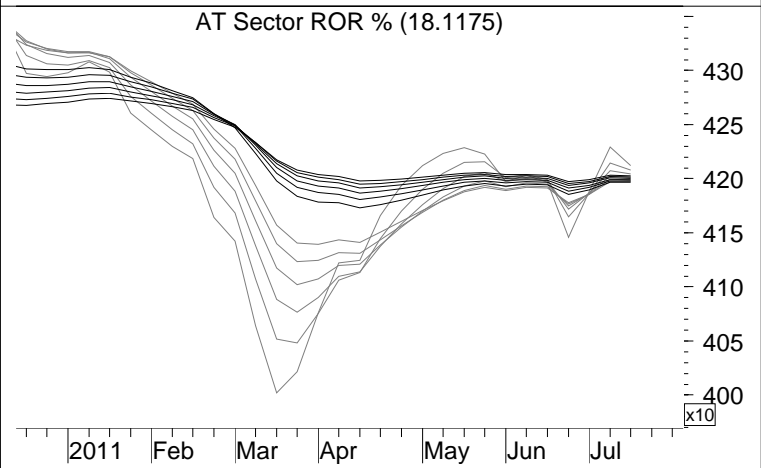
18 - Pharm&BioG3I ASX



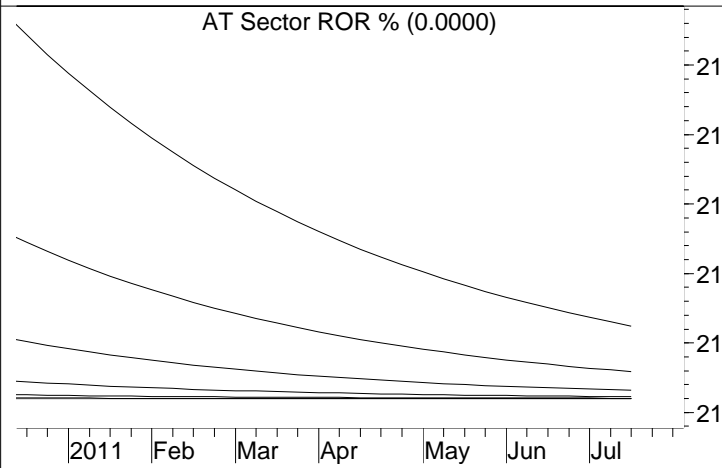
19 - Software&SG3IASX



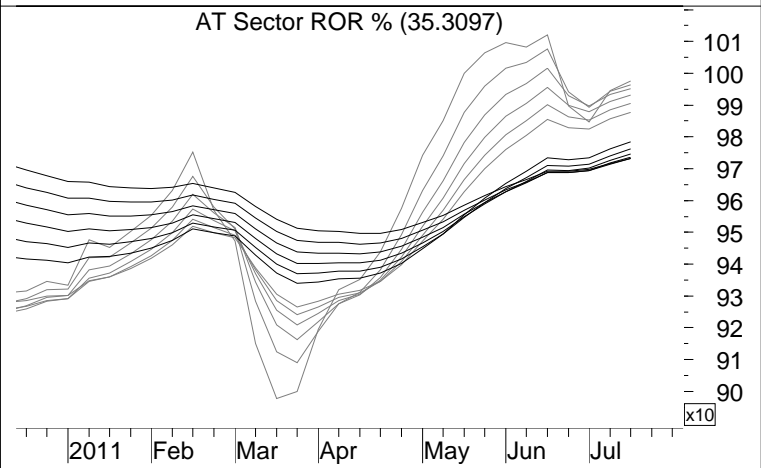
20 - Utilities G3IASX



21 - TechHrd&EqG3IASX



22 - TelecomSerG3IASX



## ActTrade GICS Industry Group Reference

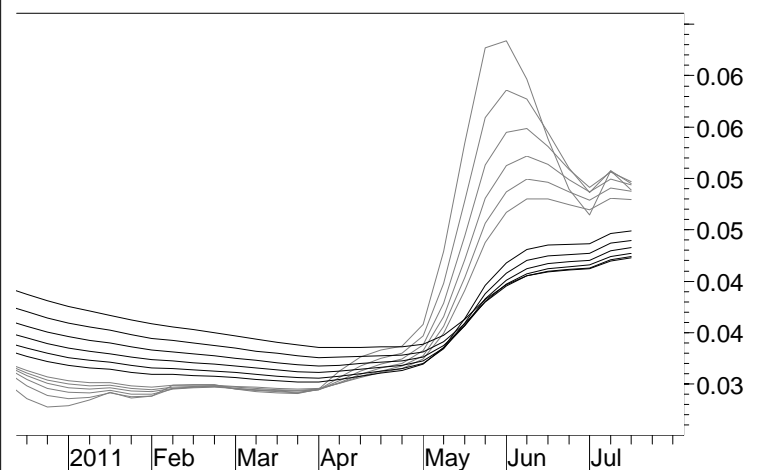
This lists the official GICS Industry Group name and it's corresponding chart number. For listed GICS Industry Groups where there is no chart, use the RoAR and MMA chart of the share in question for the sector analysis (NB this usually only occurs when a Group consists primarily of one major share).

<b>Chart Number</b>	<b>GICS Industry Group</b>
01	Energy
02	Transportation
03	Commercial & Professional Services
04	Capital Goods
05	Materials
06	Automobile & Components
07	Consumer Durables & Apparel
08	Food & Staples Retailing
09	Retailing
10	Media
11	Consumer Services
12	Food Beverage & Tobacco
13	Health Care Equipment & Services
14	Real Estate
15	Diversified Financials
16	Banks
17	Insurance
18	Pharmaceuticals & Biotechnology
19	Software & Services
20	Utilities
21	Technology Hardware & Equipment
22	Telecommunication Services
n/a	Household & Personal Products
n/a	Semiconductors & Semiconductor Equipment

# MMA Charts - Rising Equities

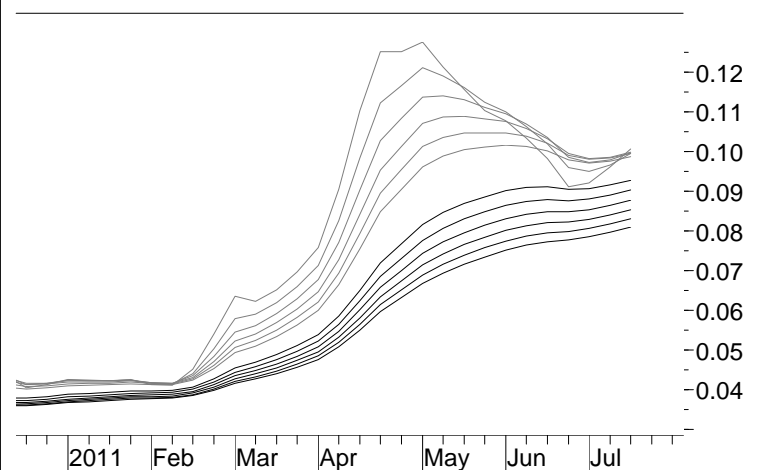
Admiralty

ADY



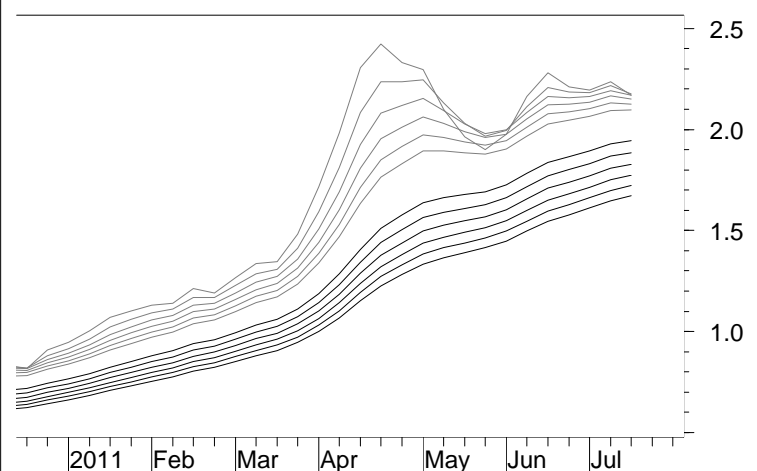
Alcyone

AYN



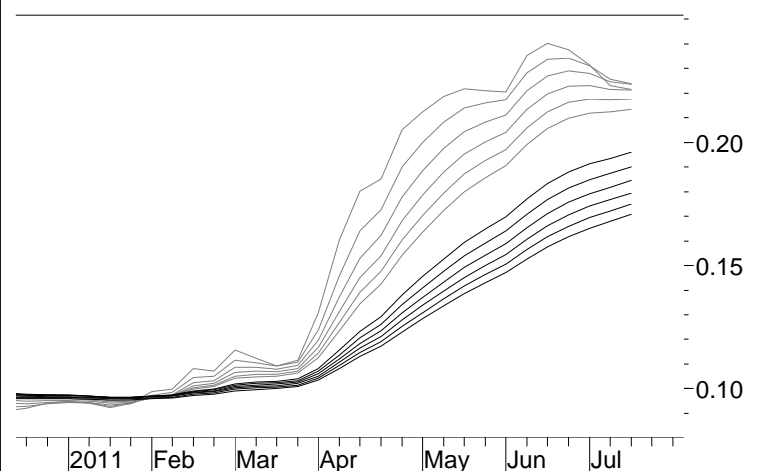
Alkane

ALK



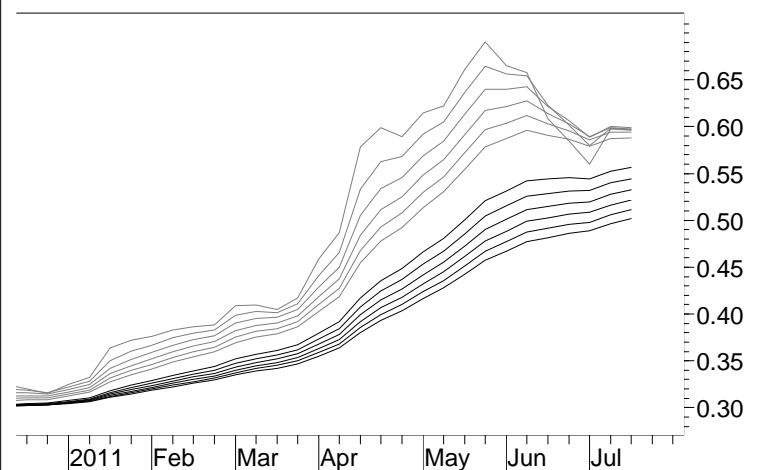
Argent Min

ARD



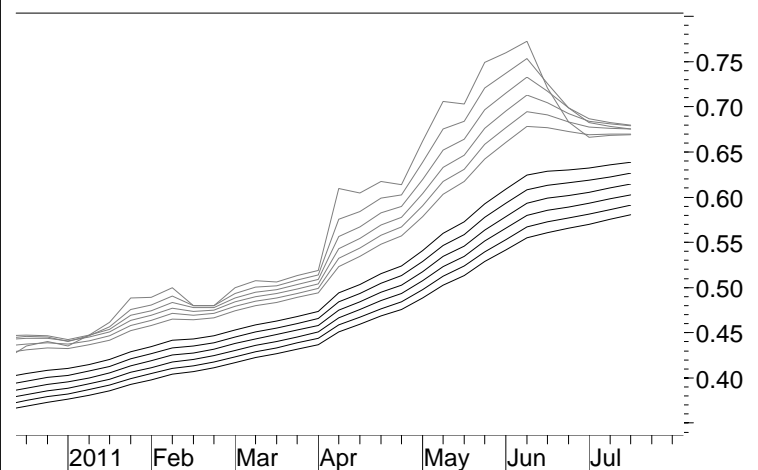
Bionomics

BNO



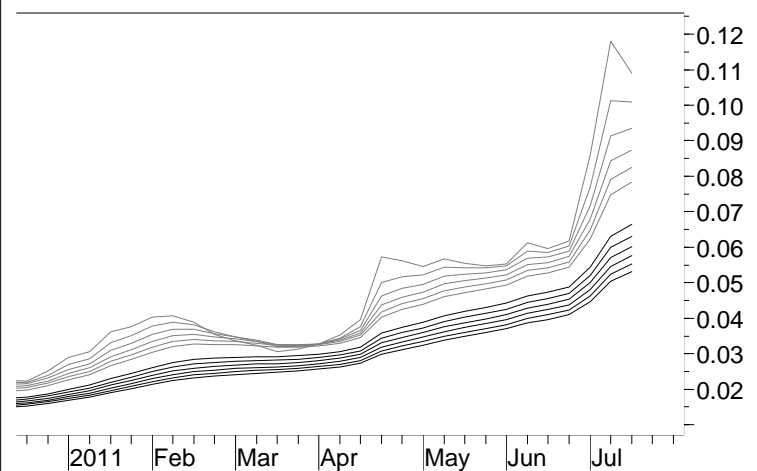
Buruenergy

BRU



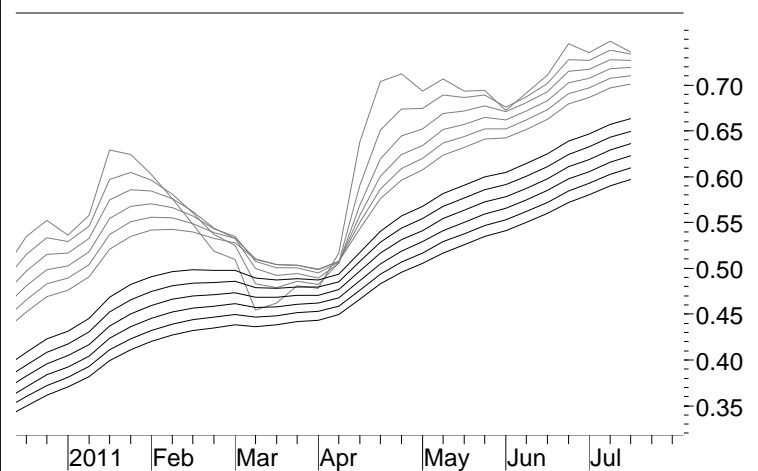
Catlimited

CEO

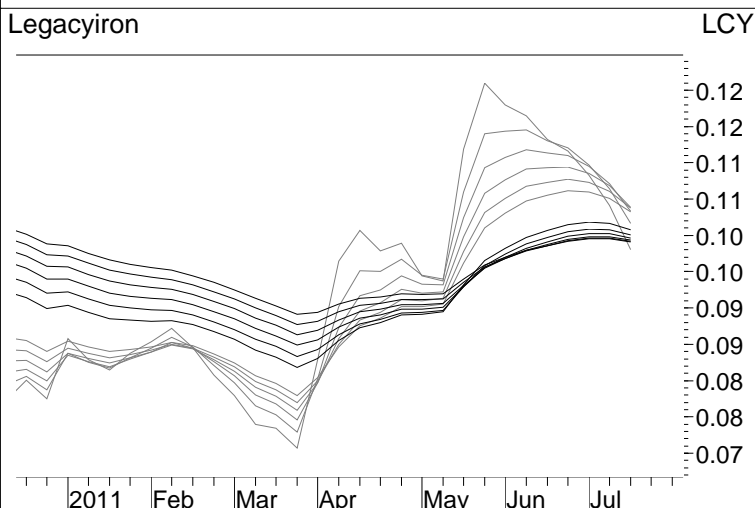
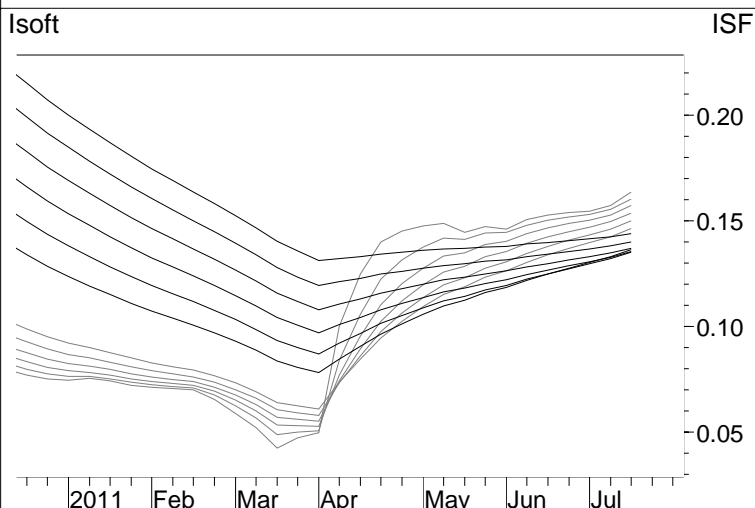
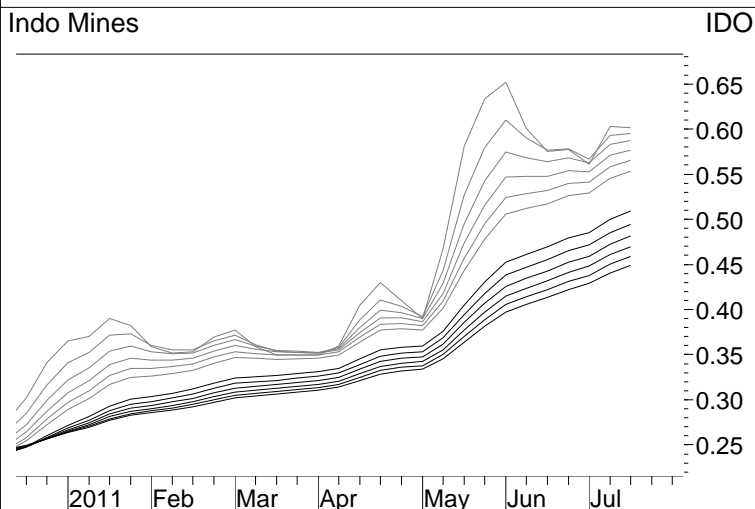
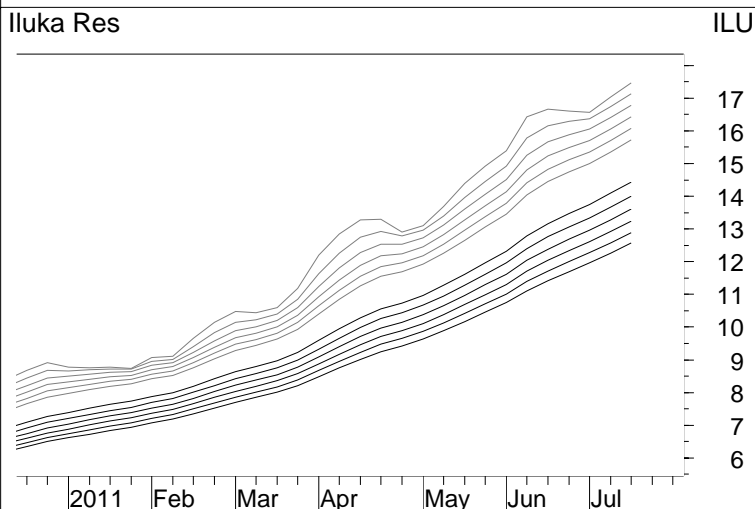
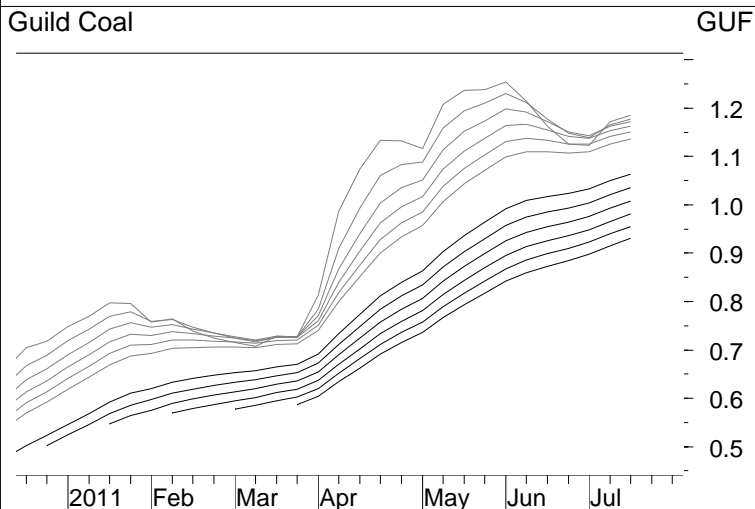
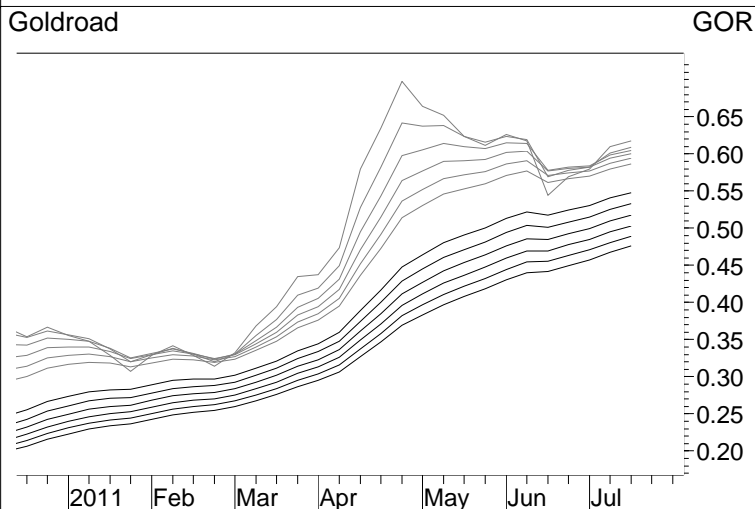
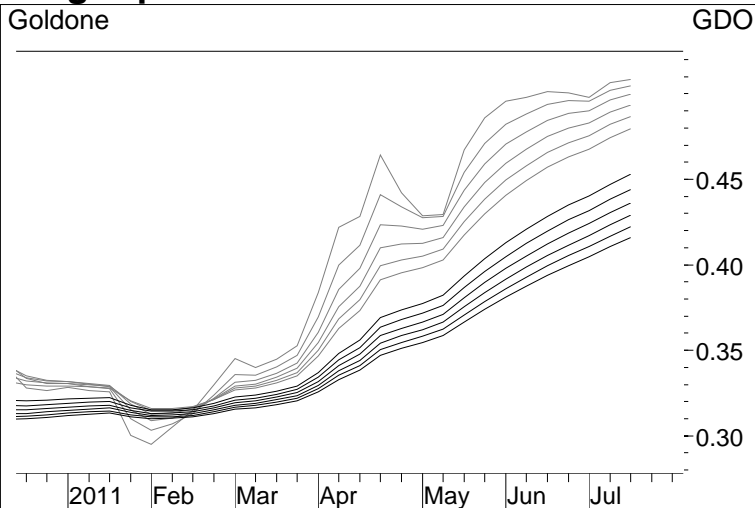
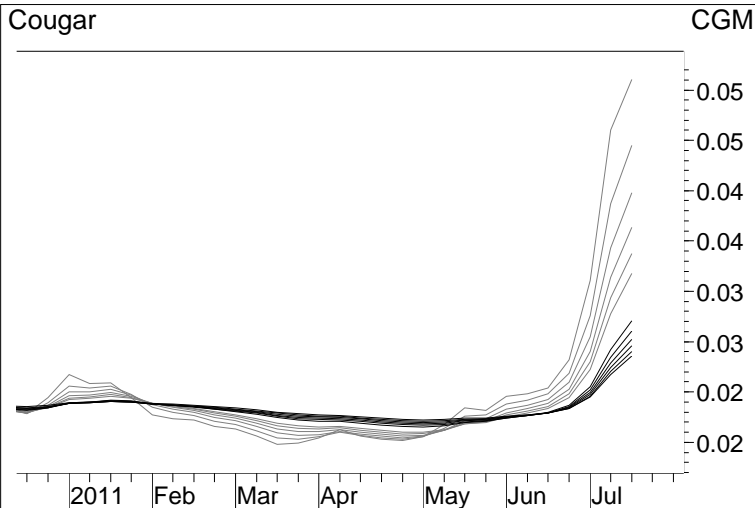


Cokal

CKA

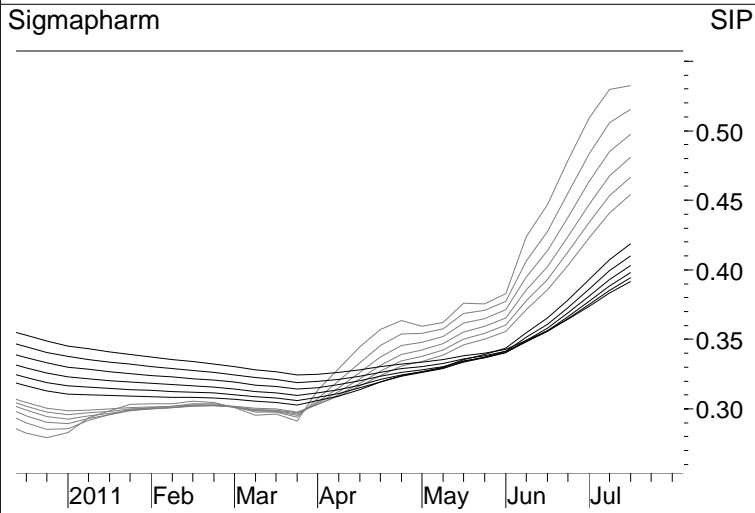
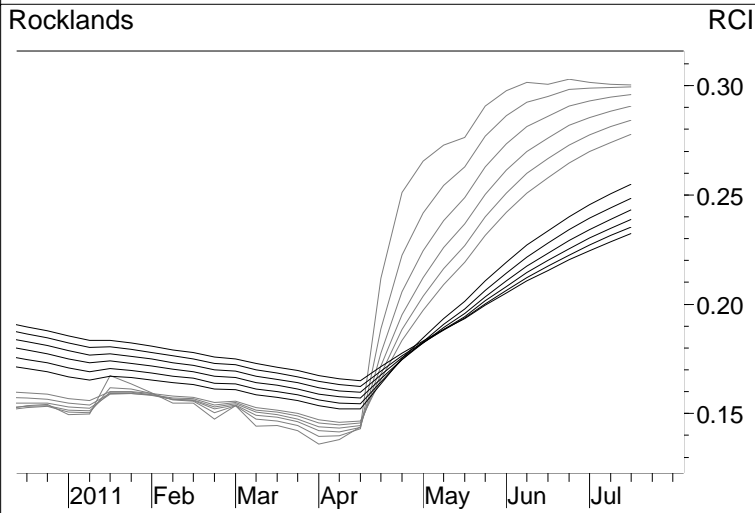
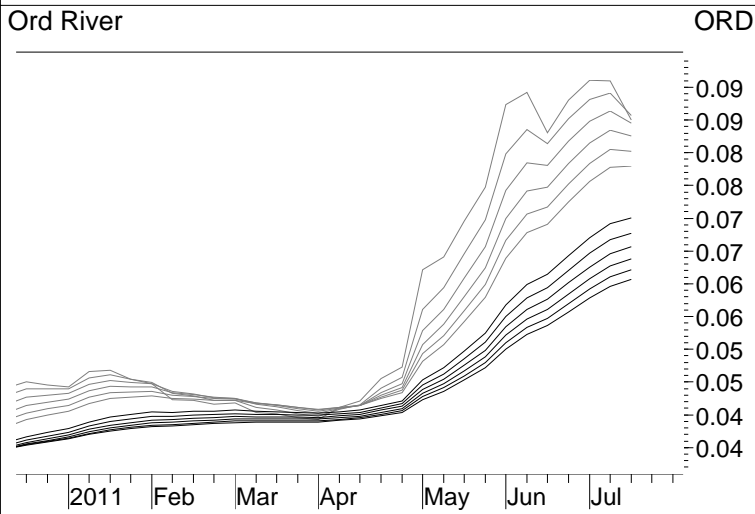
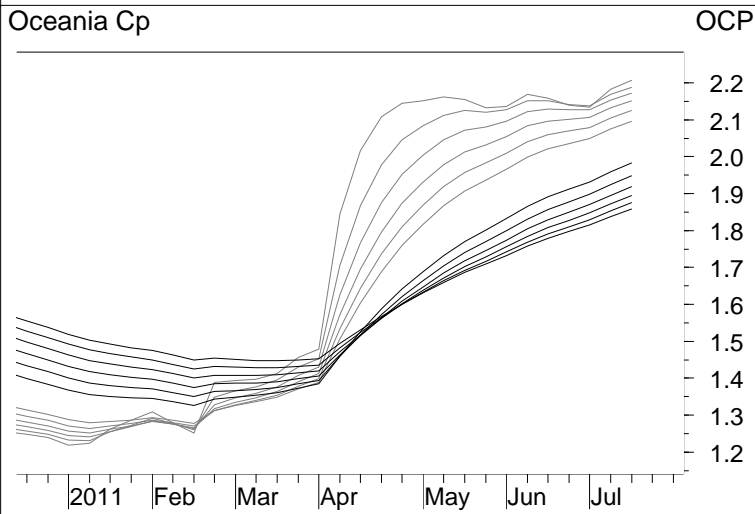
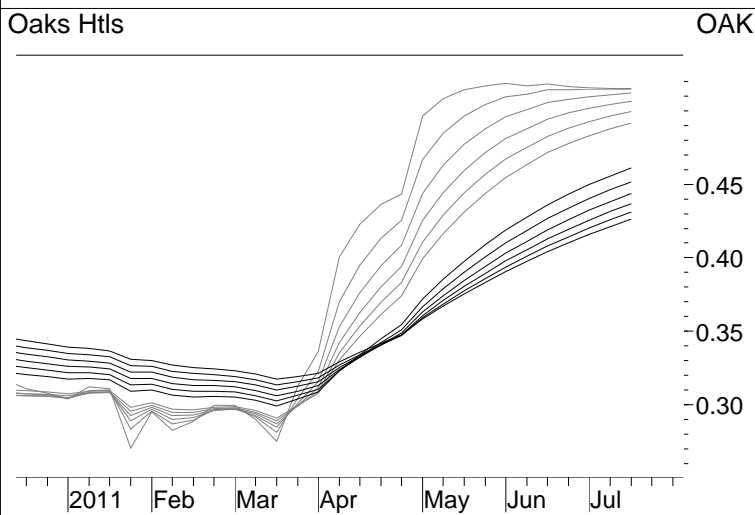
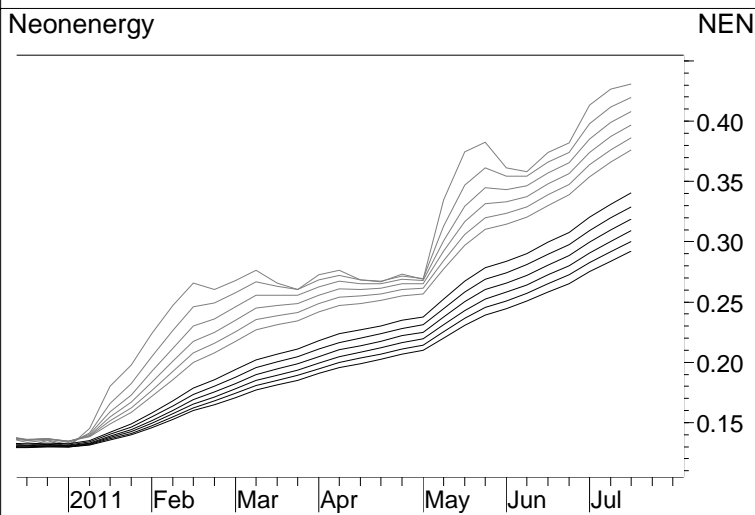
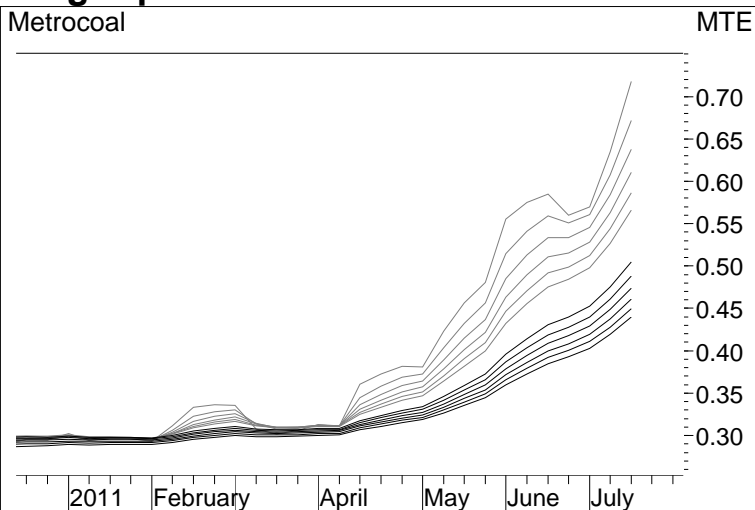
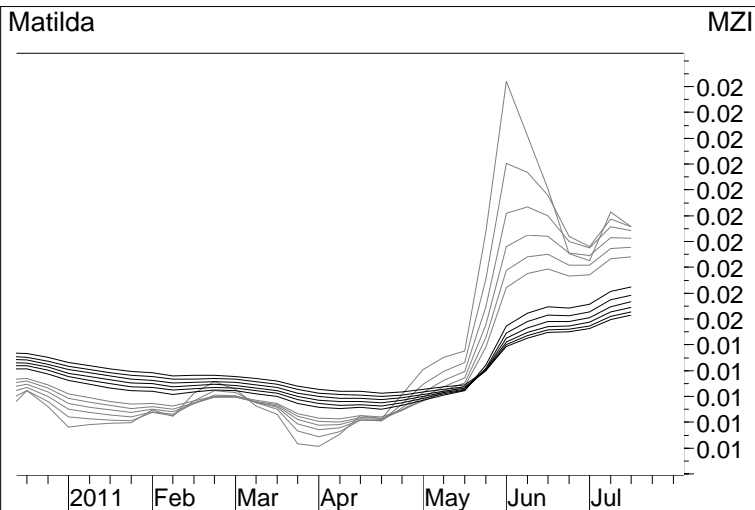


# MMA Charts - Rising Equities

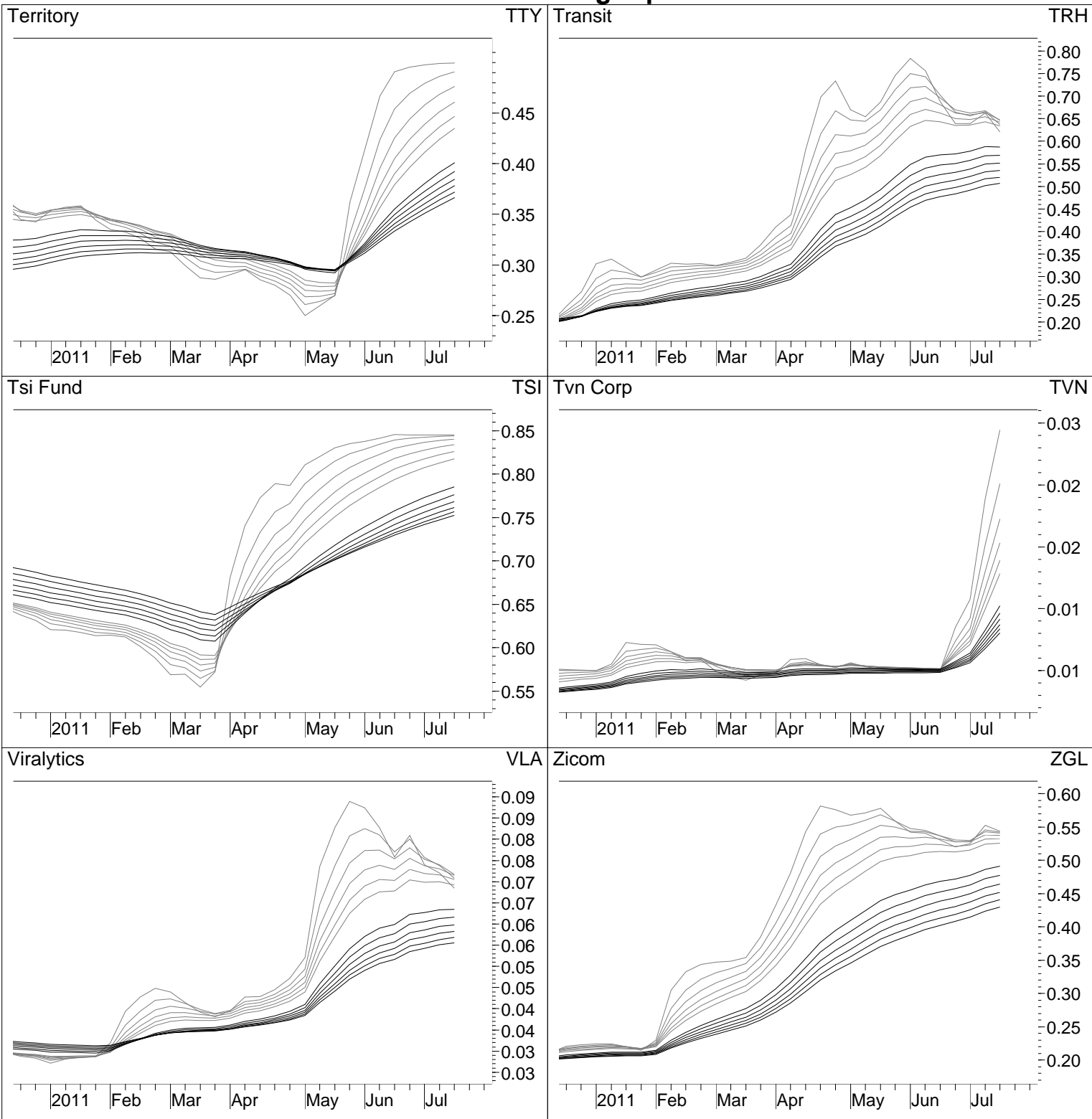




# MMA Charts - Rising Equities



# MMA Charts - Rising Equities



# *Data Tables...*

## *containing ActTrade Rising Equities for...*

---

This report is prepared by Alan Hull an authorised representative of Gryphon Learning, holder of Australian Financial Services Licence No. 246606. It is published in good faith based on the facts known at the time of preparation and does not purport to contain all relevant information in respect of the securities to which it relates (Securities).

Alan Hull has prepared this report for multiple distribution and without consideration to the investment objectives, financial situation or particular needs (Objectives) of any individual investor. Accordingly, any advice given is not a recommendation that a particular course of action is suitable for any particular person and is not suitable to be acted on as investment advice. Readers must assess whether the advice is appropriate to their Objectives before making an investment decision on the basis of this report.

Neither Gryphon Learning Pty Ltd nor Alan Hull warrant or represent the accuracy of the contents of the report. Any persons relying on the information do so at their own risk. Except to the extent that liability under any law cannot be excluded, Gryphon Learning Pty Ltd and Alan Hull disclaim liability for all loss or damage arising as a result of an opinion, advice, recommendation, representation or information expressly or impliedly published in or in relation to this report notwithstanding any error or omission including negligence.

Please note that Gryphon Learning Pty Ltd or its employees or associates, ActVest Pty Ltd or its employees or associates and Alan Hull may have interests in the financial products referred to in this document.

None of Gryphon Learning, its Authorised Representatives, the “Gryphon System”, “Gryphon MultiMedia”, and “Gryphon Scanner” take into account the investment objectives, financial situation and particular needs of any particular person and before making an investment decision on the basis of the “Gryphon System”, “Gryphon MultiMedia” and “Gryphon Scanner” or any of its authorised representatives, a prospective investor needs to consider with or without the assistance of a securities adviser, whether the advice is appropriate in the light of the particular investment needs, objectives and financial circumstances of the prospective investor.

---

### Information Policy

The formulas used to create the information contained in this document are strictly confidential. ActVest P/L constantly reviews and updates these formulas to ensure the best possible service to its Subscribers. Alan Hull, through his books and seminars, provides working equivalents to these formulas to both the general public and third party product vendors, without updates. A practical explanation for the use of the equivalent formulas can be found in Alan Hull's books.

### ©Copyright 2011

This document is copyright. This document, in part or whole, may not be reproduced or transmitted in any form or by any means, electronic, mechanical, photocopying, recording, scanning or otherwise without prior written permission. This document is protected by finger printing identification and can be traced back to the original recipient. Copyright infringement is a criminal offence and will always be reported.

### ActTrade Newsletter Availability

The ActTrade Newsletter is available for download from the member's website [www.acttrade.net](http://www.acttrade.net) each weekend. When the Newsletter is posted to the website, an email is sent to all subscribers with a link direct to the website. **Please note that if you do not receive the weekly reminder email, you can still download the Newsletter by going straight to the website and entering your access details.** Please also note that the Newsletter will always be available by midday on the Sunday unless otherwise notified.

# ActTrade Rising Equities

Share Code	Closing Price(\$)		Central Cord(\$)	Upper(\$) Deviation	Lower(\$) Deviation	ROAR (%)	Weighting for 2% risk	Industry Group
ADY	0.052	Dn	0.062	0.083	0.047	180	20	Materials
ALK	2.100	Dn	2.374	2.872	2.008	96	20	Materials
ARD	0.220	Up	0.238	0.289	0.187	188	13	Materials
AYN	0.105	Up	0.105	0.131	0.095	106	20	Materials
BNO	0.595	Dn	0.648	0.779	0.520	112	16	Pharmaceuticals & Biotechnology
BRU	0.670	-	0.691	0.851	0.647	107	20	Energy
CEO	0.100	Dn	0.188	0.240	0.060	229	5	Health Care Equipment & Services
CGM	0.061	Dn	0.080	0.098	0.031	184	4	Materials
CKA	0.725	Dn	0.790	0.914	0.635	134	16	Materials
GDO	0.510	Dn	0.514	0.536	0.499	119	20	Materials
GOR	0.625	Dn	0.650	0.809	0.484	132	9	Materials
GUF	1.200	Dn	1.302	1.516	1.023	132	14	Energy
IDO	0.600	Dn	0.672	0.805	0.517	164	14	Materials
ILU	17.890	Up	17.989	20.331	15.205	125	13	Materials
ISF	0.170	Up	0.167	0.183	0.158	255	20	Health Care Equipment & Services
LCY	0.097	Dn	0.112	0.145	0.084	111	15	Materials
MTE	0.800	Up	0.804	1.003	0.484	198	5	Energy
MZI	0.023	Dn	0.028	0.041	0.018	154	9	Materials
NEN	0.435	Dn	0.477	0.574	0.361	114	12	Energy
OAK	0.515	-	0.515	0.522	0.513	164	20	Real Estate
OCP	2.230	-	2.281	2.414	2.148	124	20	Diversified Financials
ORD	0.084	Dn	0.104	0.135	0.073	222	15	Materials
RCI	0.300	-	0.308	0.332	0.298	232	20	Energy
SIP	0.535	Dn	0.574	0.639	0.505	150	20	Health Care Equipment & Services
TRH	0.580	Dn	0.717	0.924	0.575	175	20	Materials
TSI	0.845	-	0.849	0.856	0.843	118	20	Utilities
TTY	0.500	-	0.551	0.613	0.513	172	5	Materials
TVN	0.035	Up	0.042	0.053	0.013	154	3	Retailing
VLA	0.070	Dn	0.088	0.118	0.068	186	20	Pharmaceuticals & Biotechnology
ZGL	0.535	Dn	0.585	0.685	0.501	91	20	Capital Goods