

Breakout Trading

Newsletter

Charts & Data

This report is prepared by Alan Hull an authorised representative of Gryphon Learning, holder of Australian Financial Services Licence No. 246606. It is published in good faith based on the facts known at the time of preparation and does not purport to contain all relevant information in respect of the securities to which it relates (Securities).

Alan Hull has prepared this report for multiple distribution and without consideration to the investment objectives, financial situation or particular needs (Objectives) of any individual investor. Accordingly, any advice given is not a recommendation that a particular course of action is suitable for any particular person and is not suitable to be acted on as investment advice. Readers must assess whether the advice is appropriate to their Objectives before making an investment decision on the basis of this report.

Neither Gryphon Learning Pty Ltd nor Alan Hull warrant or represent the accuracy of the contents of the report. Any persons relying on the information do so at their own risk. Except to the extent that liability under any law cannot be excluded, Gryphon Learning Pty Ltd and Alan Hull disclaim liability for all loss or damage arising as a result of an opinion, advice, recommendation, representation or information expressly or impliedly published in or in relation to this report notwithstanding any error or omission including negligence.

Please note that Gryphon Learning Pty Ltd or its employees or associates, ActVest Pty Ltd or its employees or associates and Alan Hull may have interests in the financial products referred to in this document.

None of Gryphon Learning, its Authorised Representatives, the “Gryphon System”, “Gryphon MultiMedia”, and “Gryphon Scanner” take into account the investment objectives, financial situation and particular needs of any particular person and before making an investment decision on the basis of the “Gryphon System”, “Gryphon MultiMedia” and “Gryphon Scanner” or any of its authorised representatives, a prospective investor needs to consider with or without the assistance of a securities adviser, whether the advice is appropriate in the light of the particular investment needs, objectives and financial circumstances of the prospective investor.

Information Policy

The formulas used to create the information contained in this document are strictly confidential. *ActVest* P/L constantly reviews and updates these formulas to ensure the best possible service to its Subscribers. Alan Hull, through his books and seminars, provides working equivalents to the *ActVest* formulas to both the general public and third party product vendors, without updates. A practical explanation for the use of the equivalent formulas can be found in Alan Hull's books.

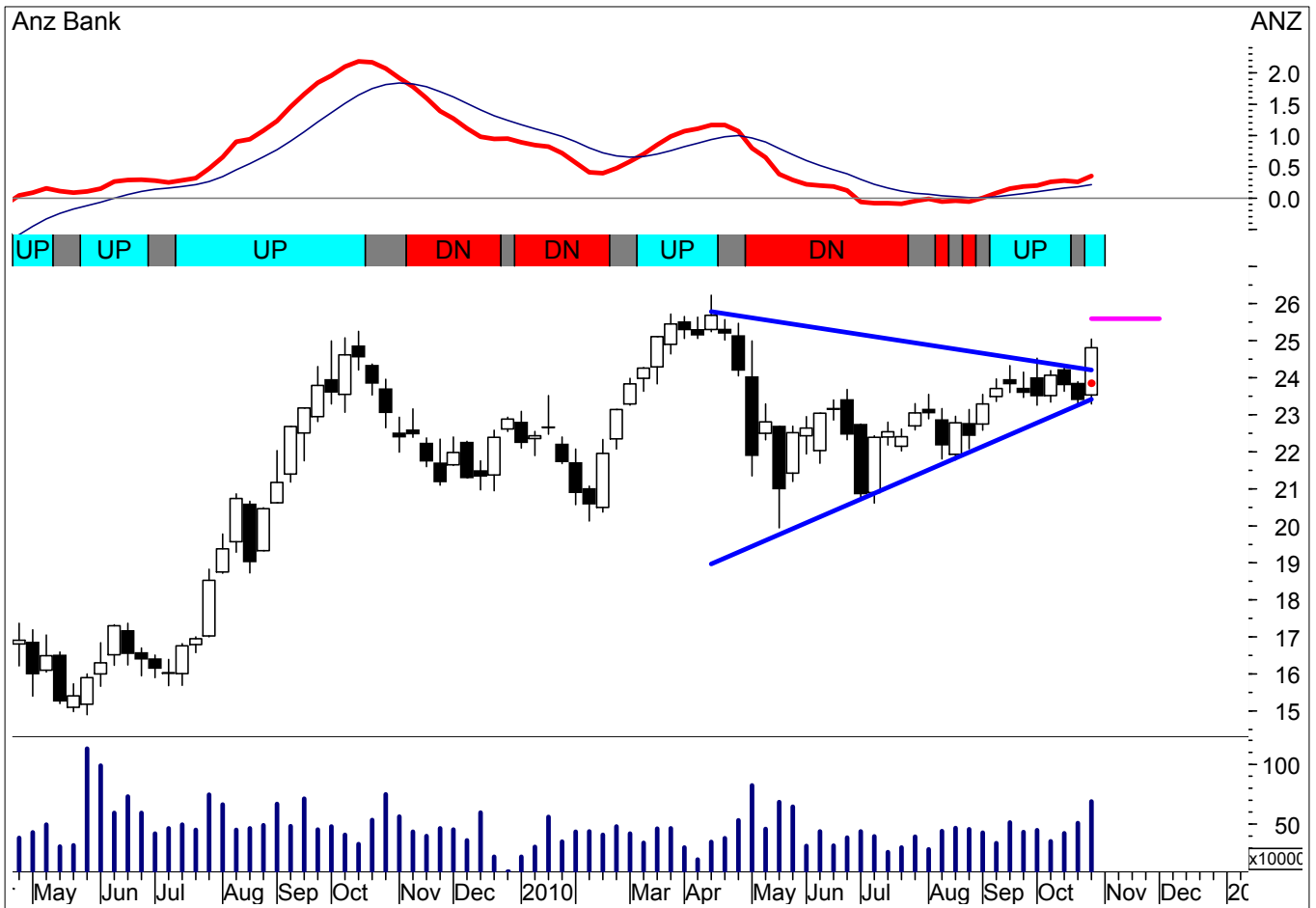
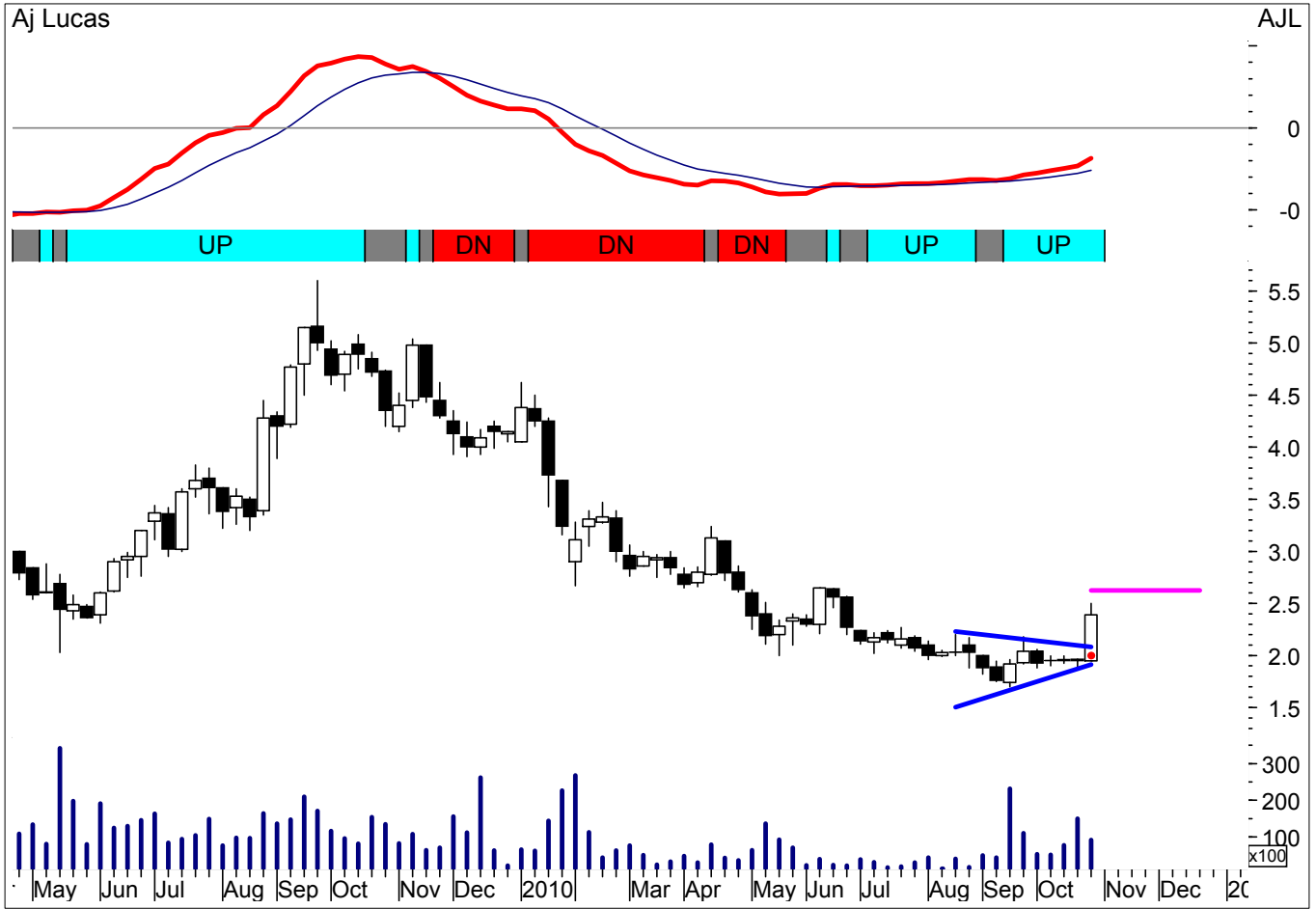
©Copyright 2010

This document is copyright. This document, in part or whole, may not be reproduced or transmitted in any form or by any means, electronic, mechanical, photocopying, recording, scanning or otherwise without prior written permission. This document is protected by finger printing identification and can be traced back to the original recipient. Copyright infringement is a criminal offence and will always be reported.

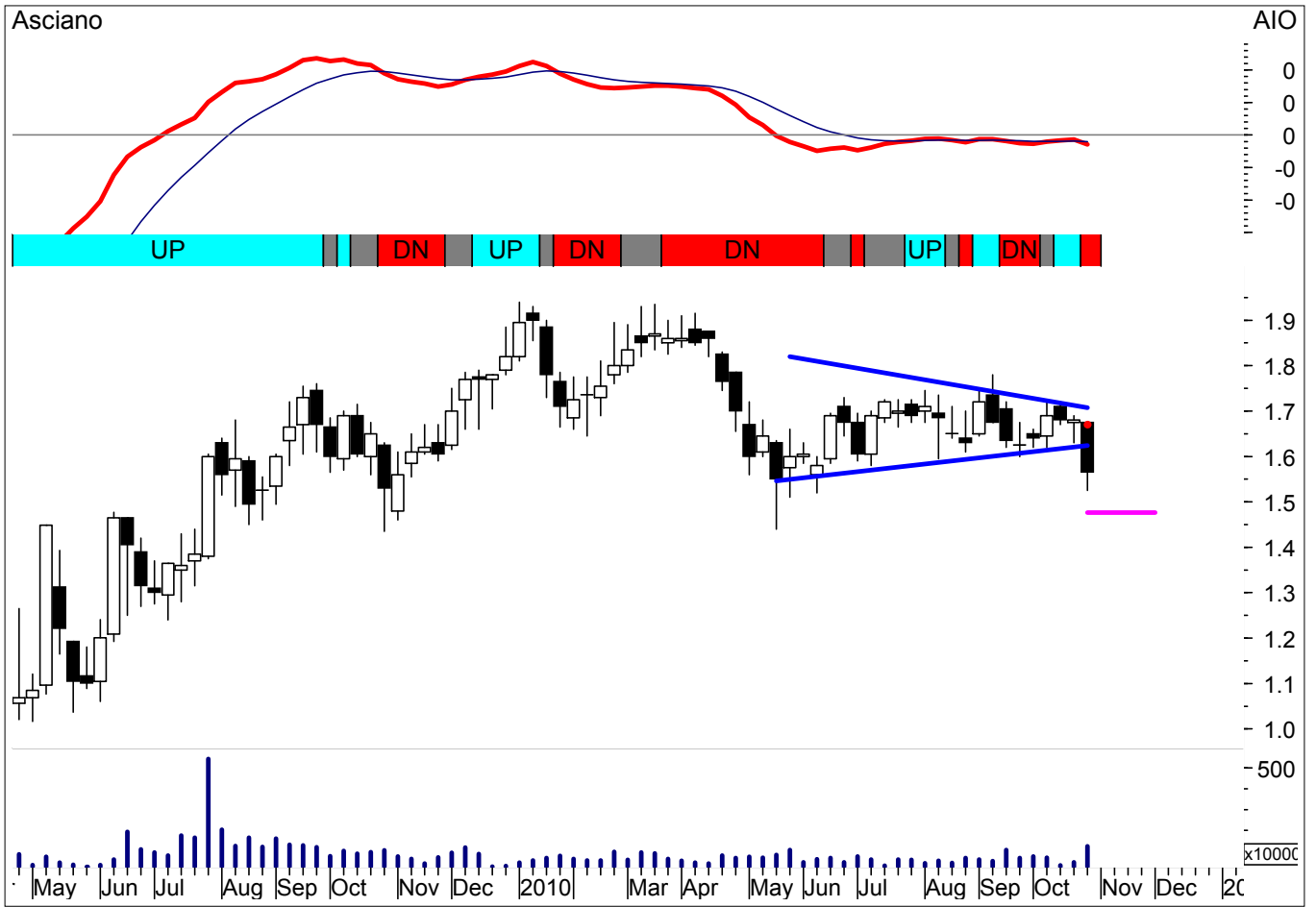
Breakout Trading Newsletter Availability

The newsletter is available for download from the member's website www.breakouttrading.com.au each weekend. When the Newsletter is posted to the website, an email is sent to all subscribers with a link direct to the website. **Please note that if you do not receive the weekly reminder email, you can still download the Newsletter by going straight to the website and entering your access details.** Please also note that the latest Newsletter will always be available by midday on the Sunday unless otherwise notified.

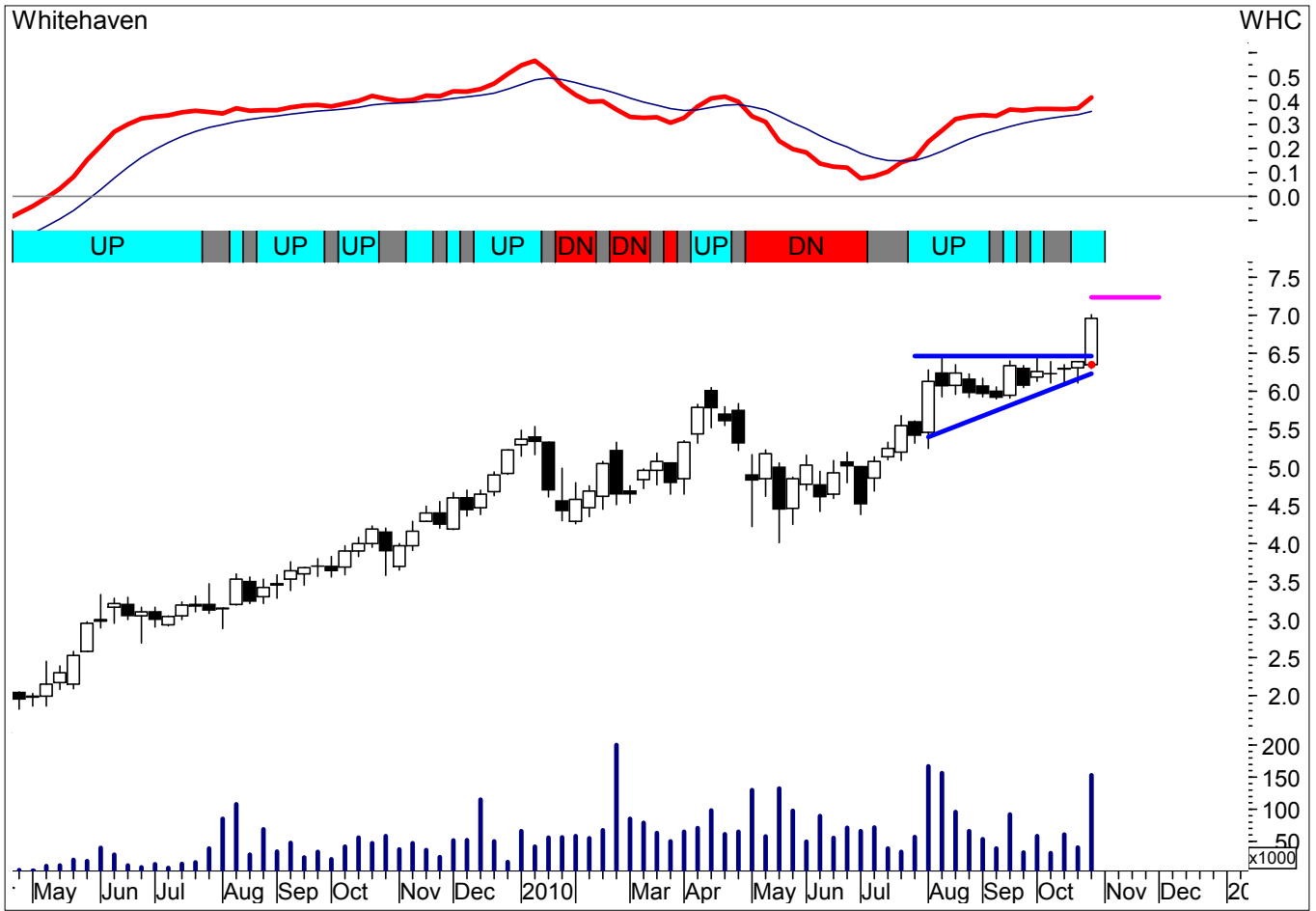
New Trades This Week



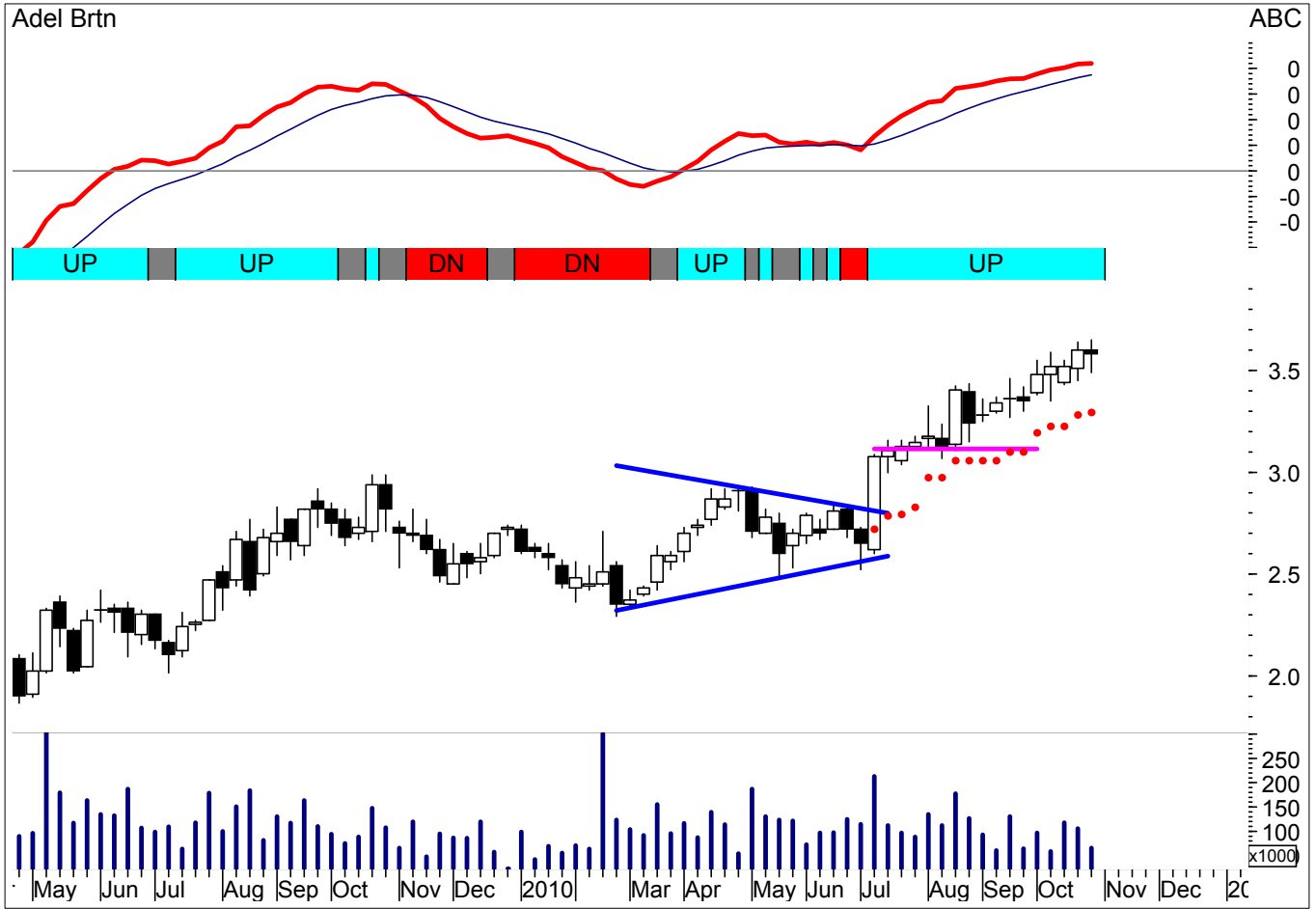
New Trades This Week



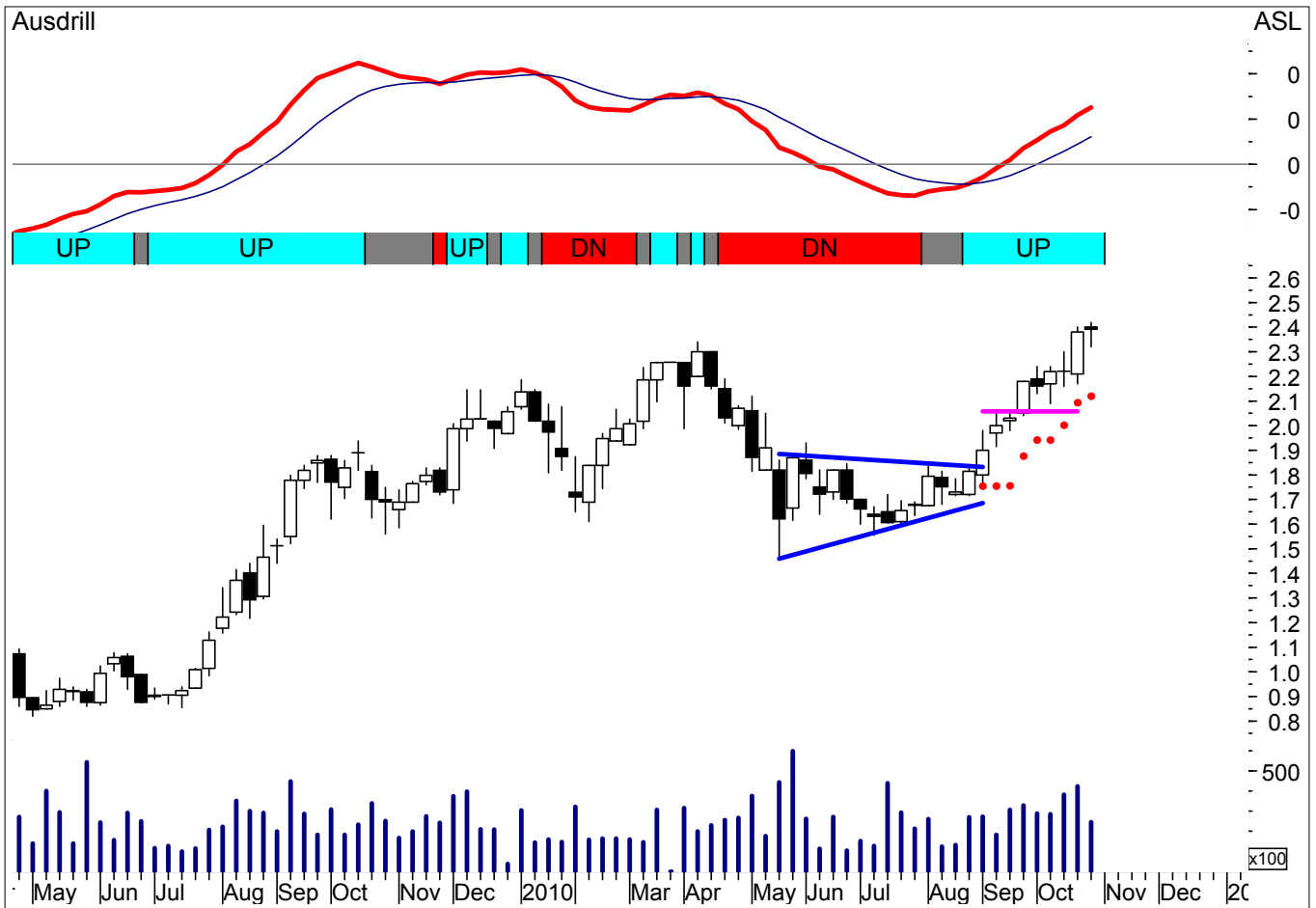
New Trades This Week



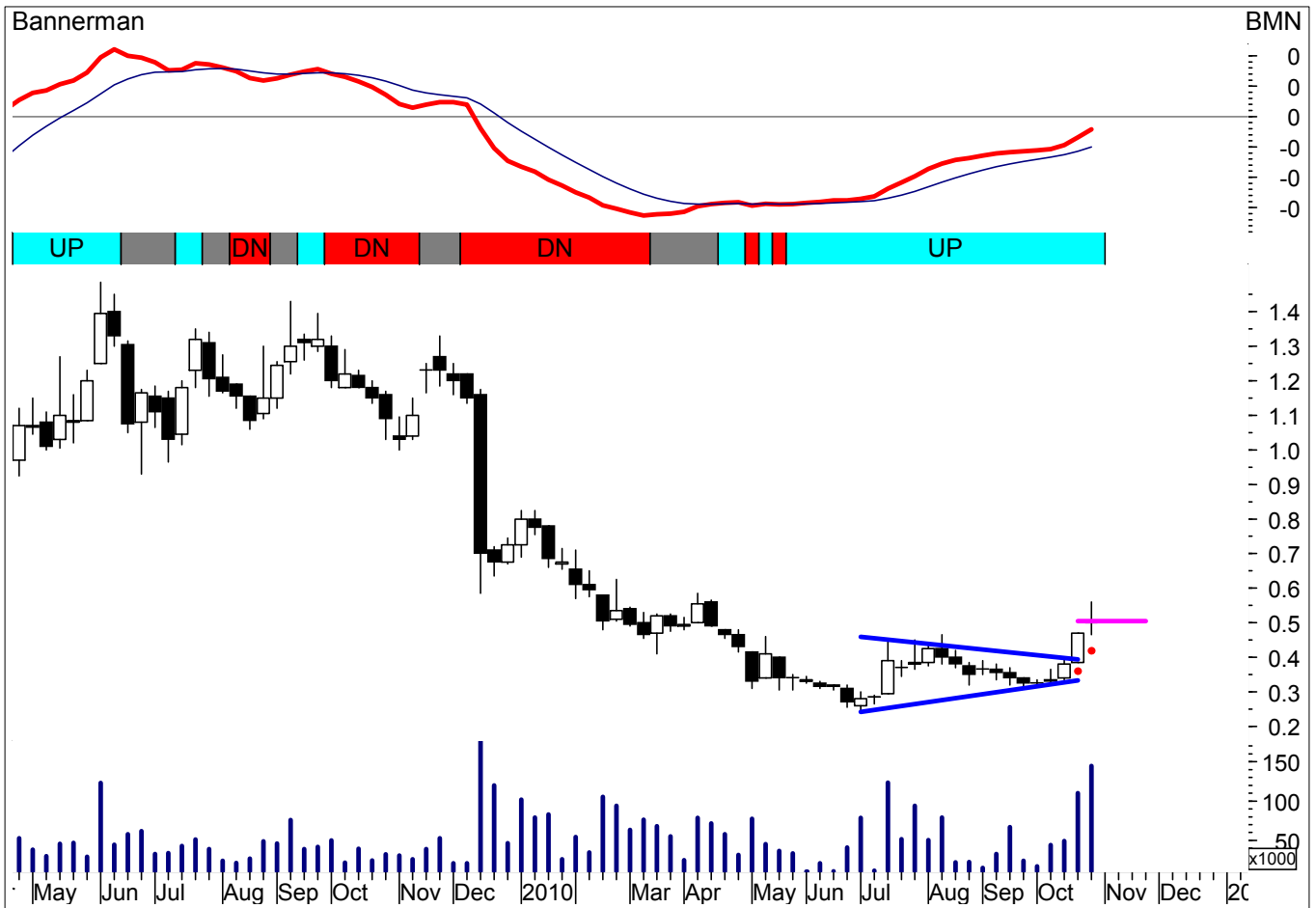
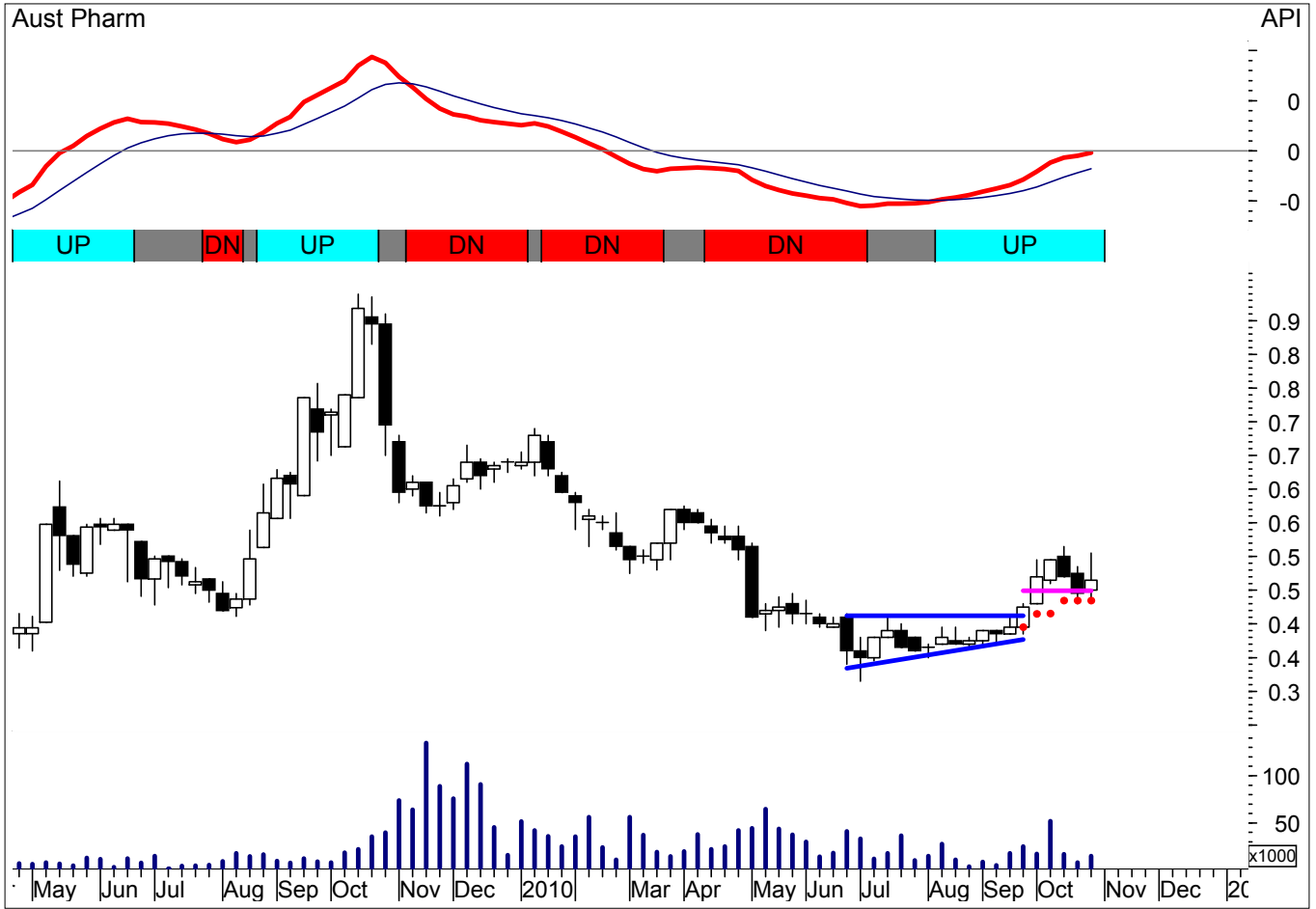
Long Trades in Progress



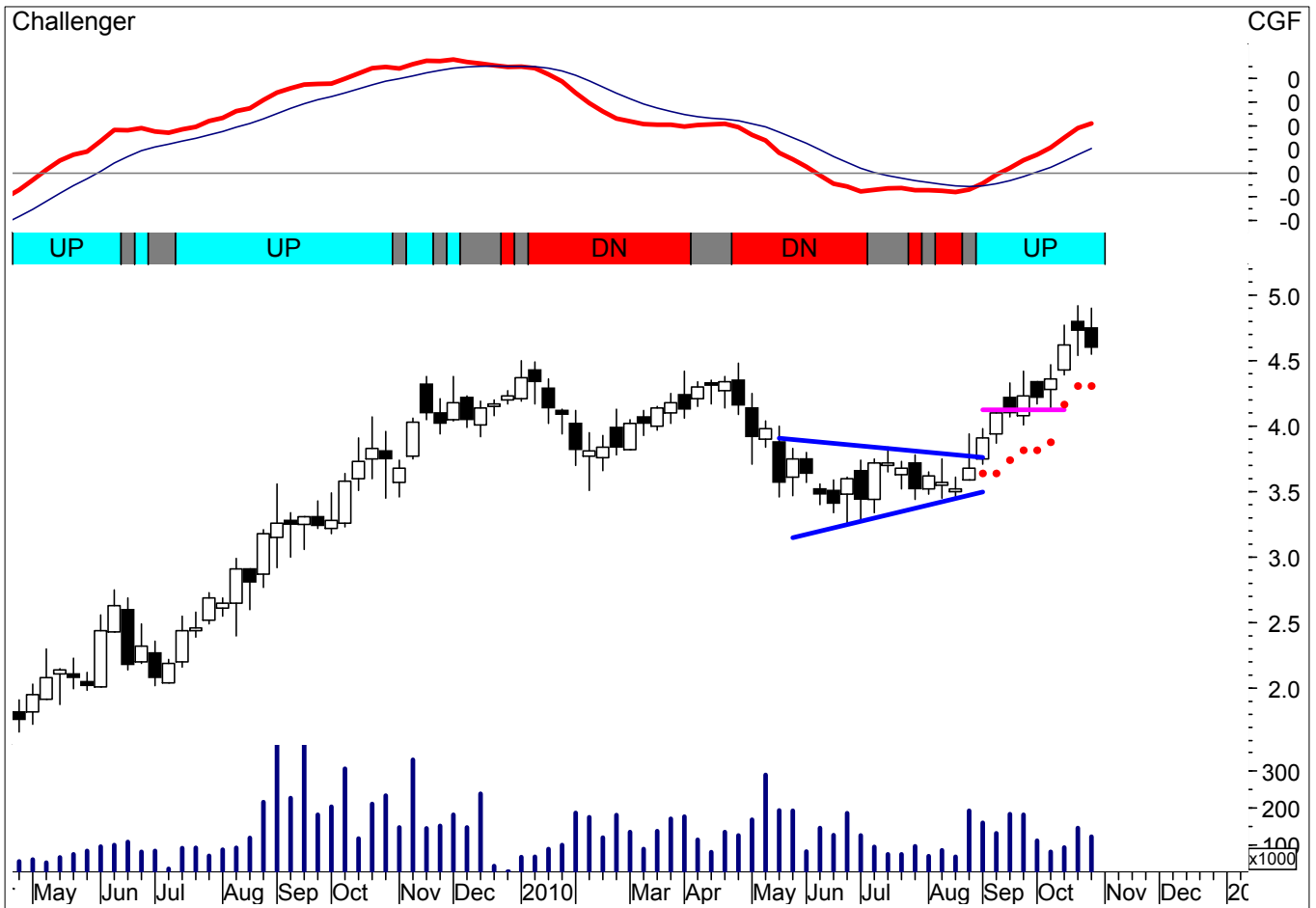
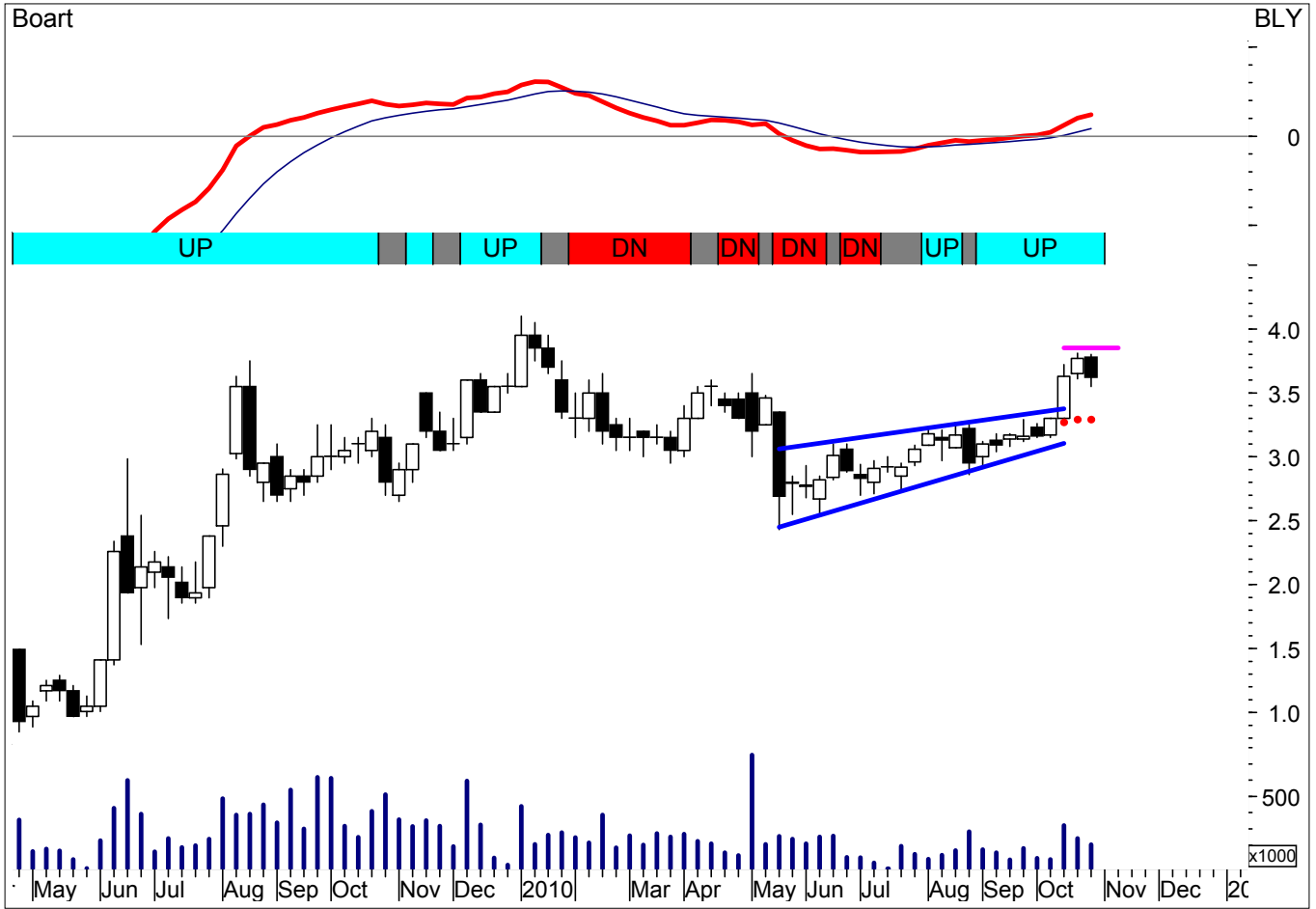
Long Trades in Progress



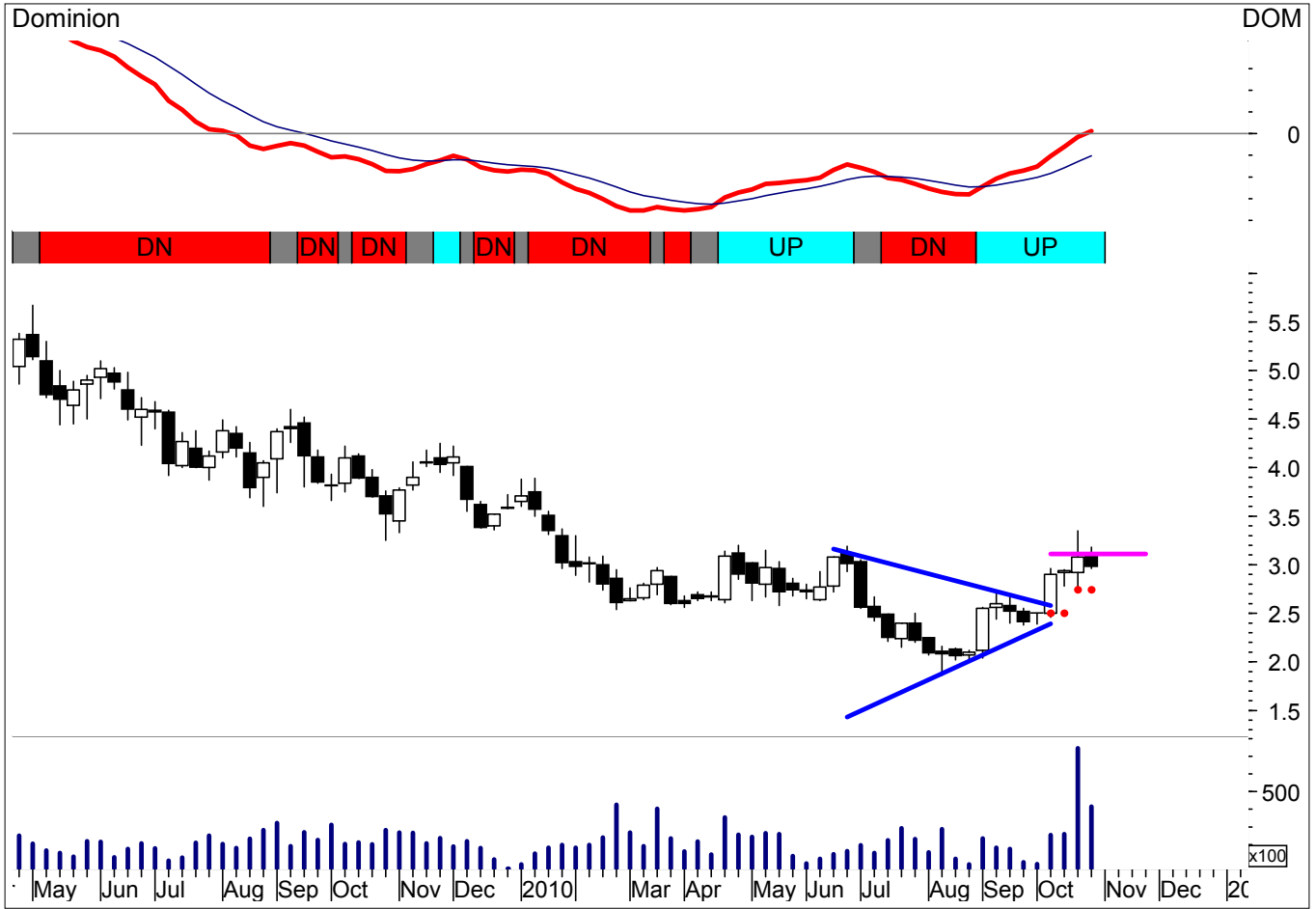
Long Trades in Progress



Long Trades in Progress



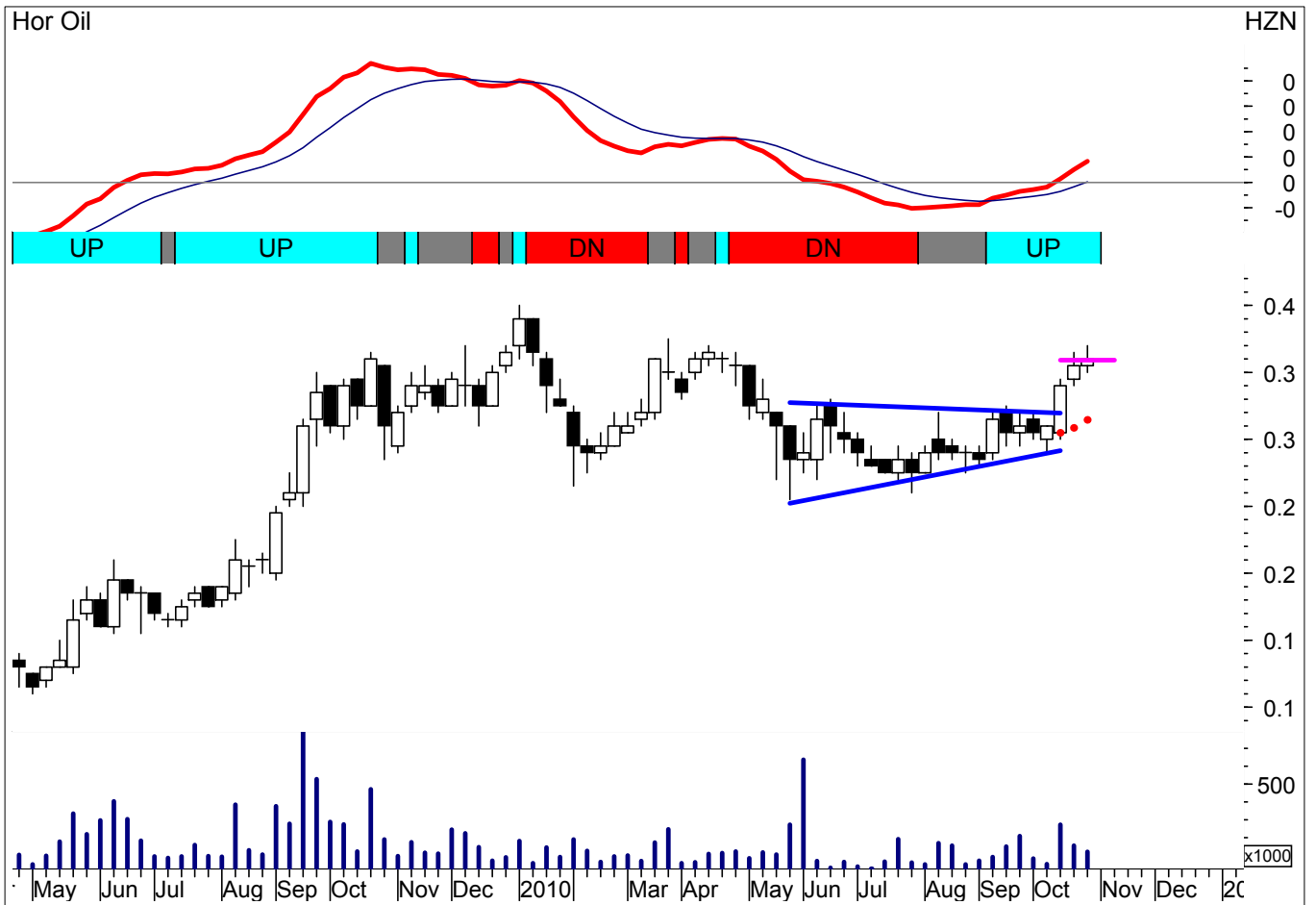
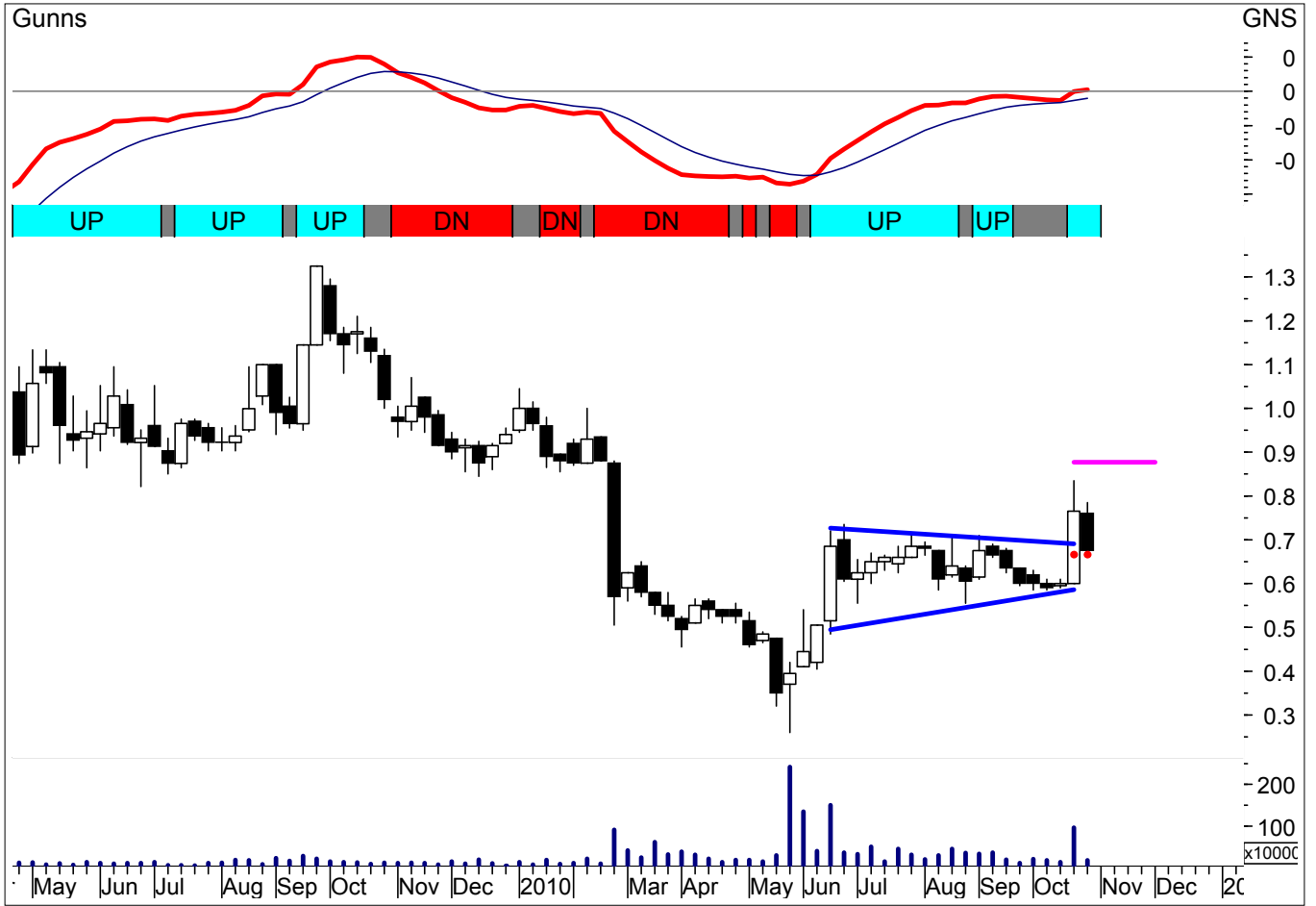
Long Trades in Progress



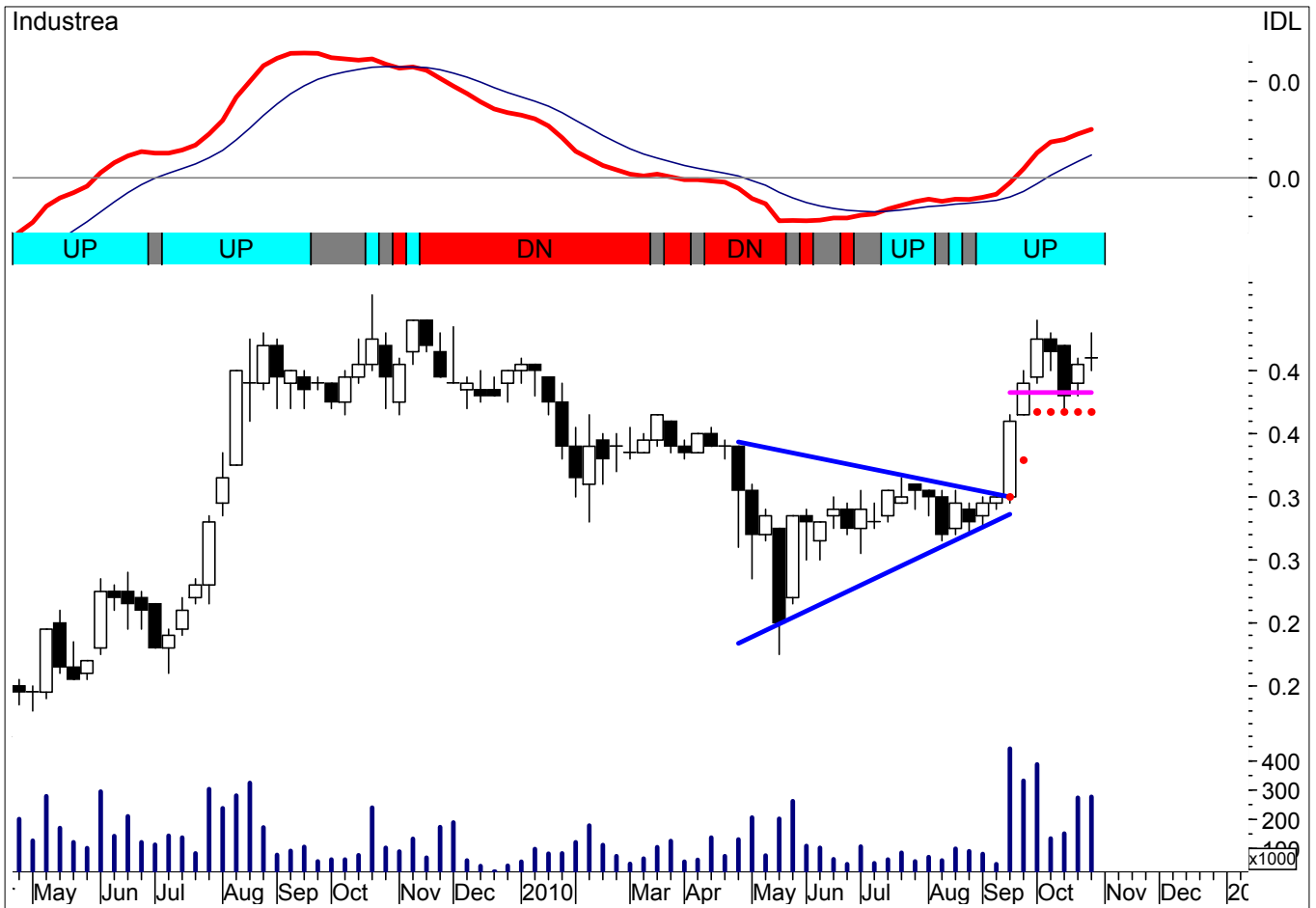
Long Trades in Progress



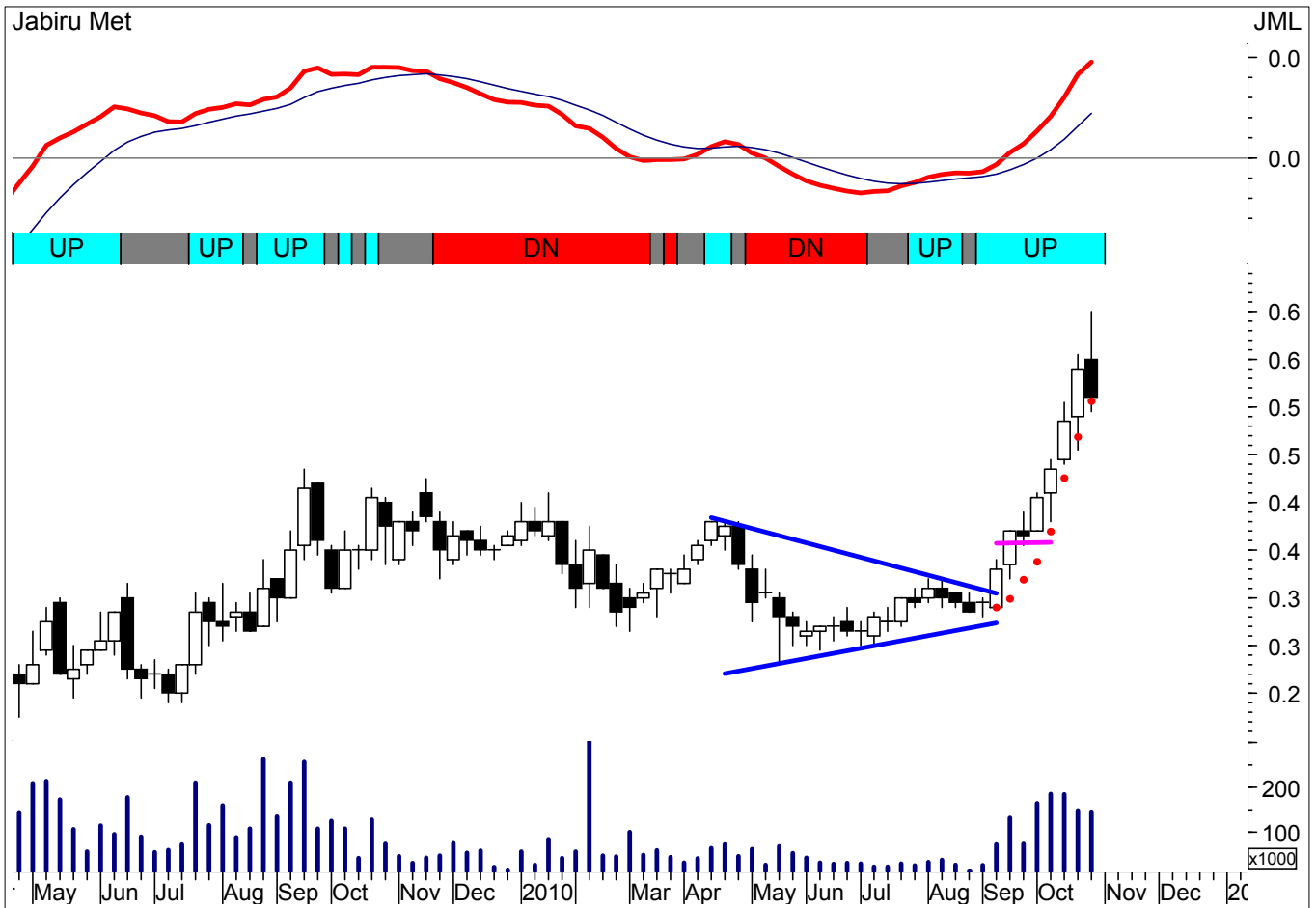
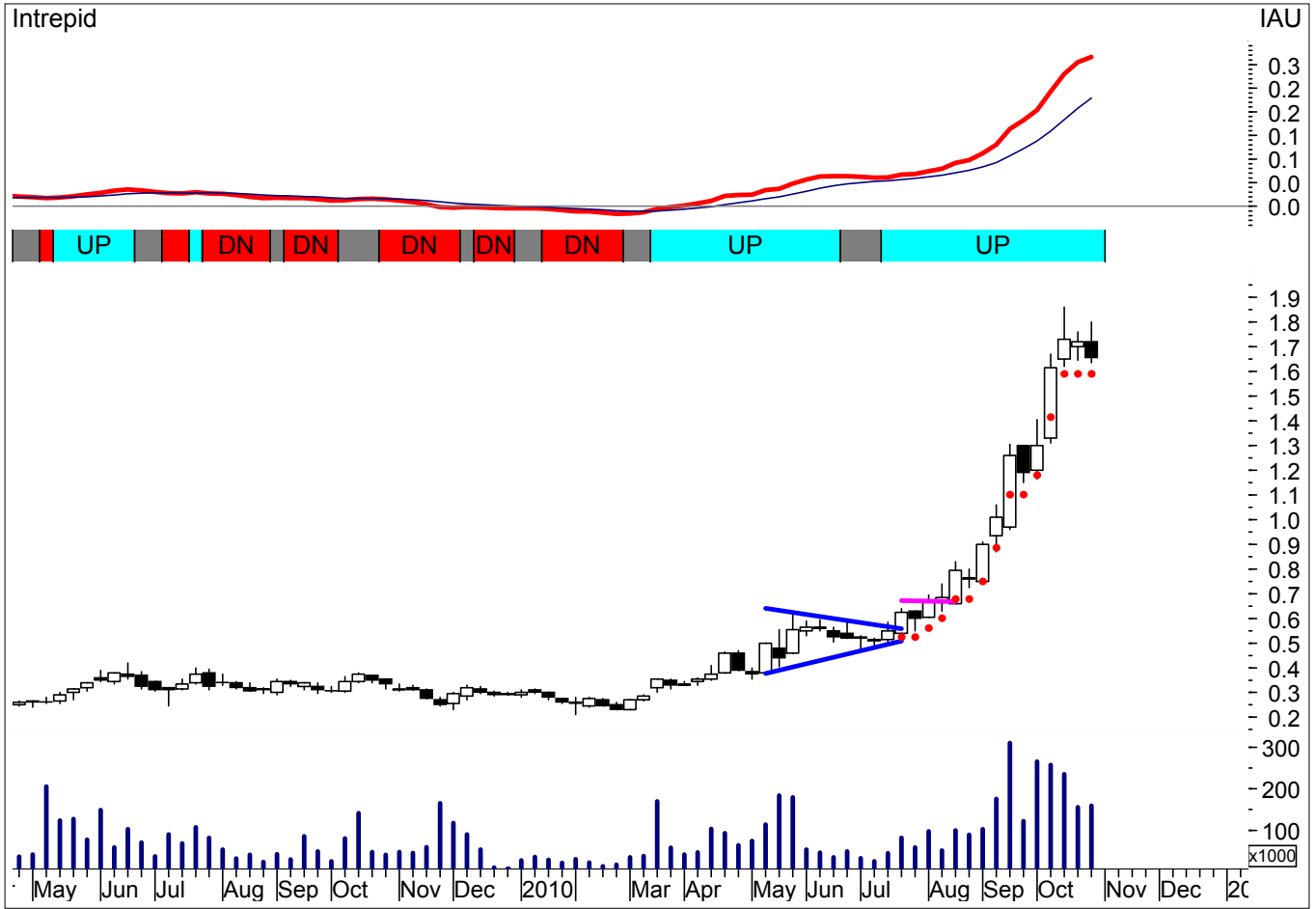
Long Trades in Progress



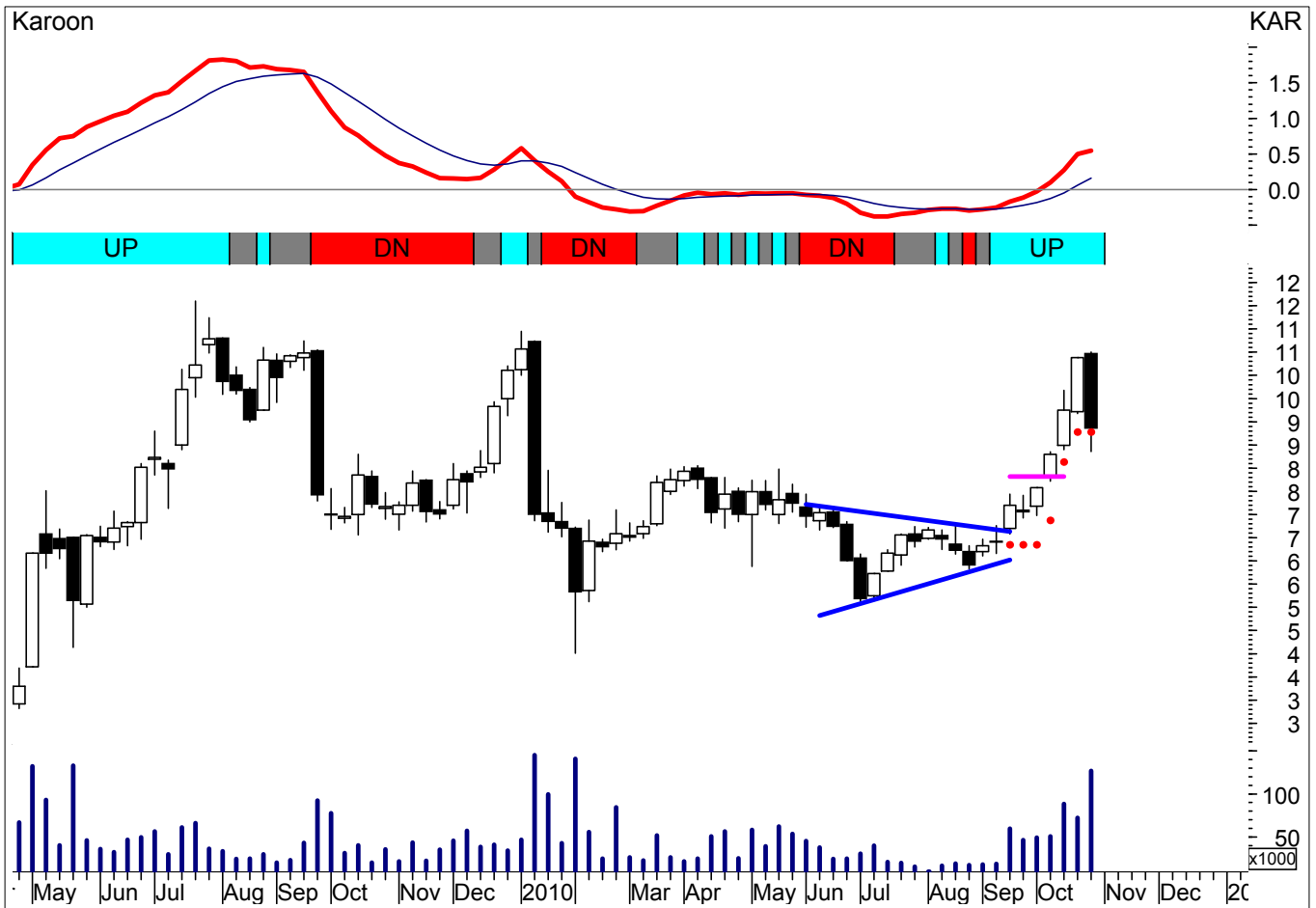
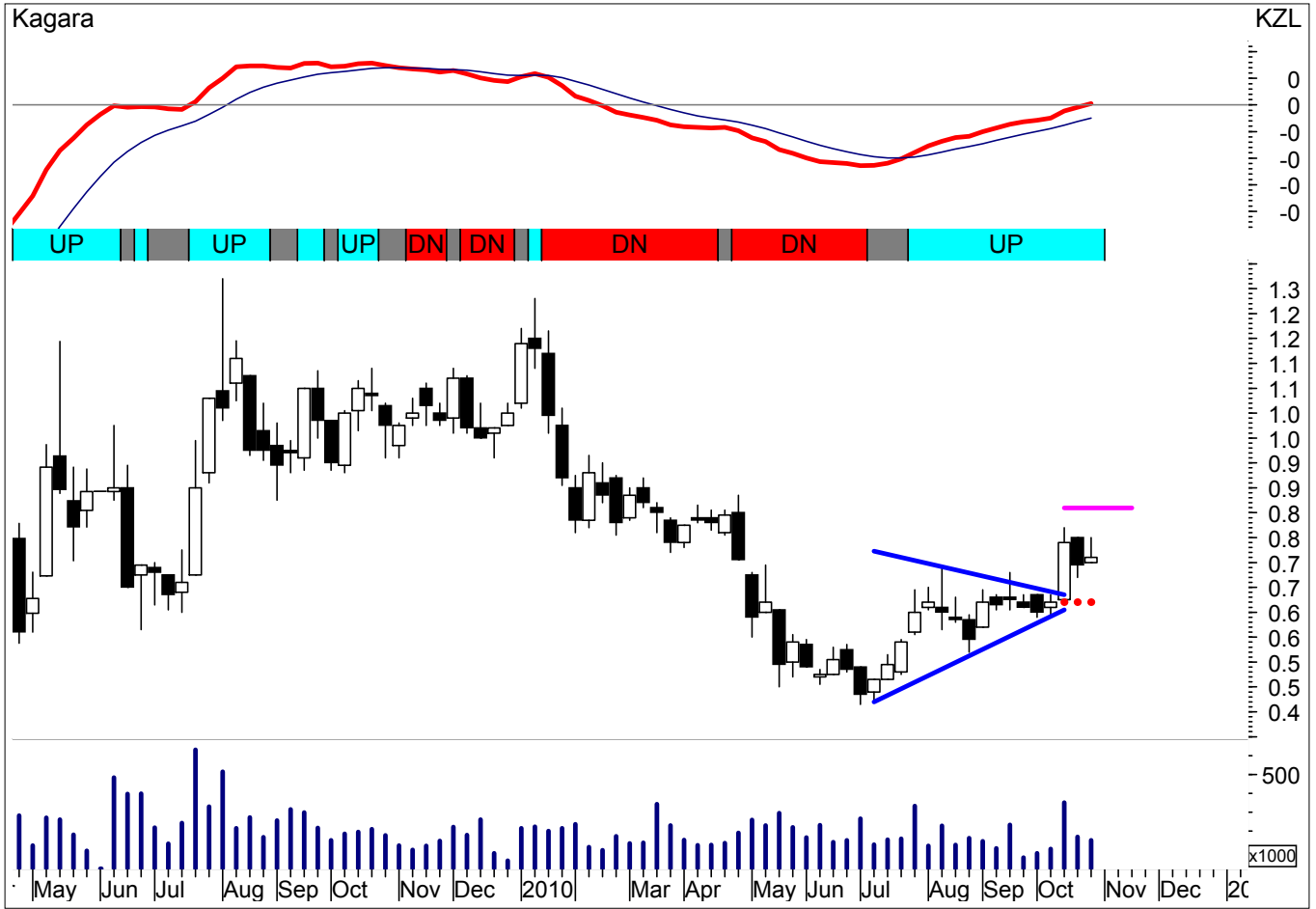
Long Trades in Progress



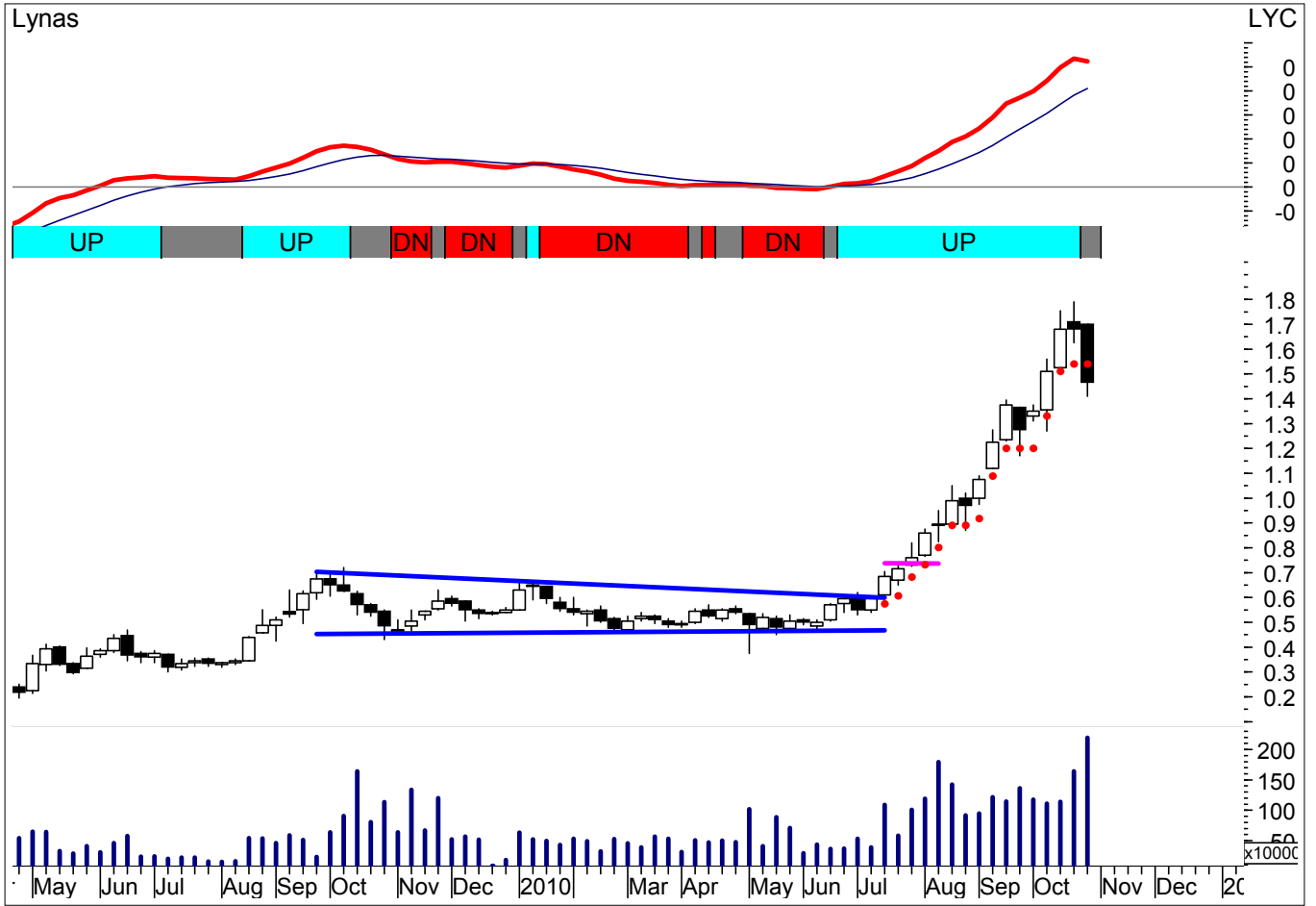
Long Trades in Progress



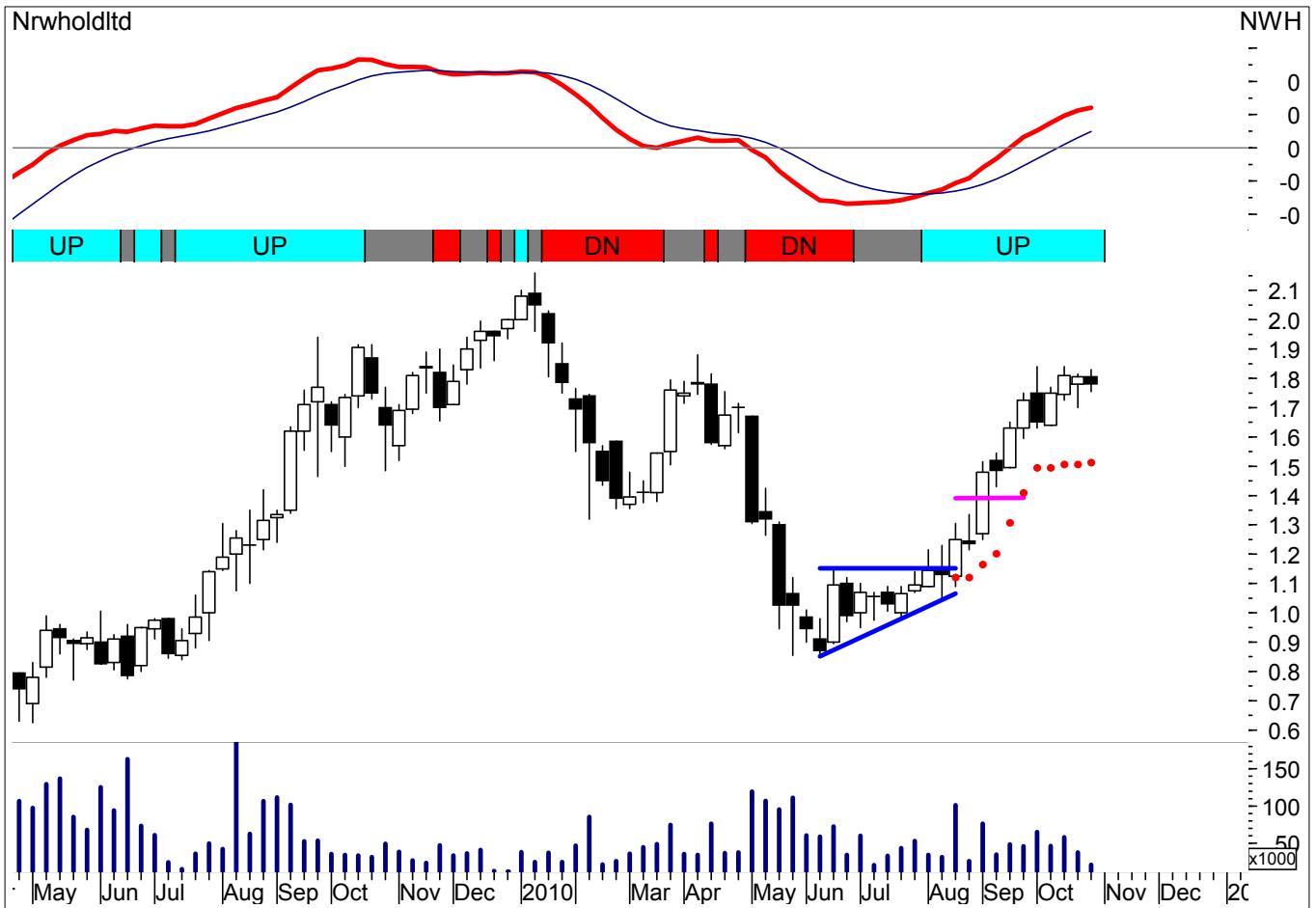
Long Trades in Progress



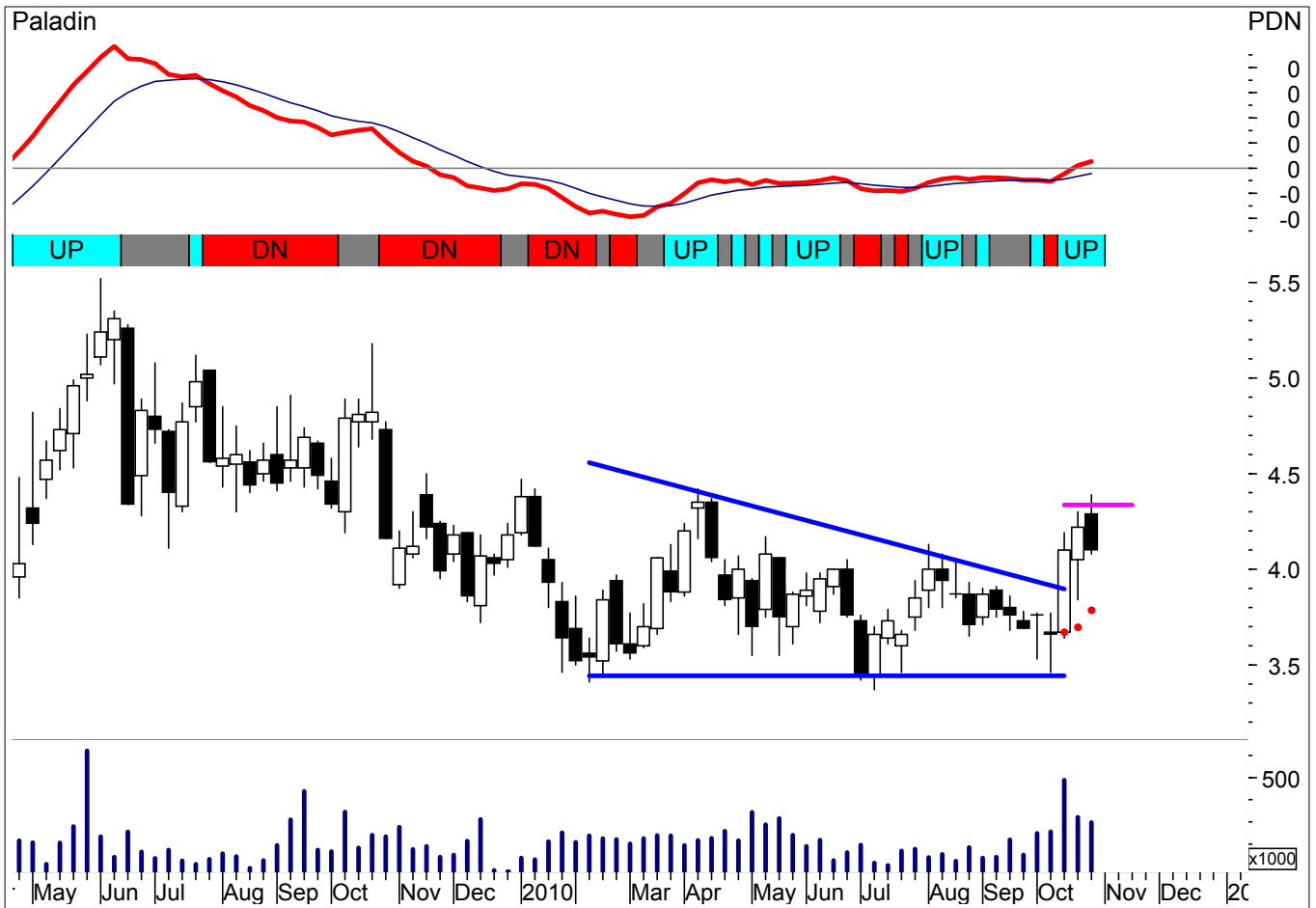
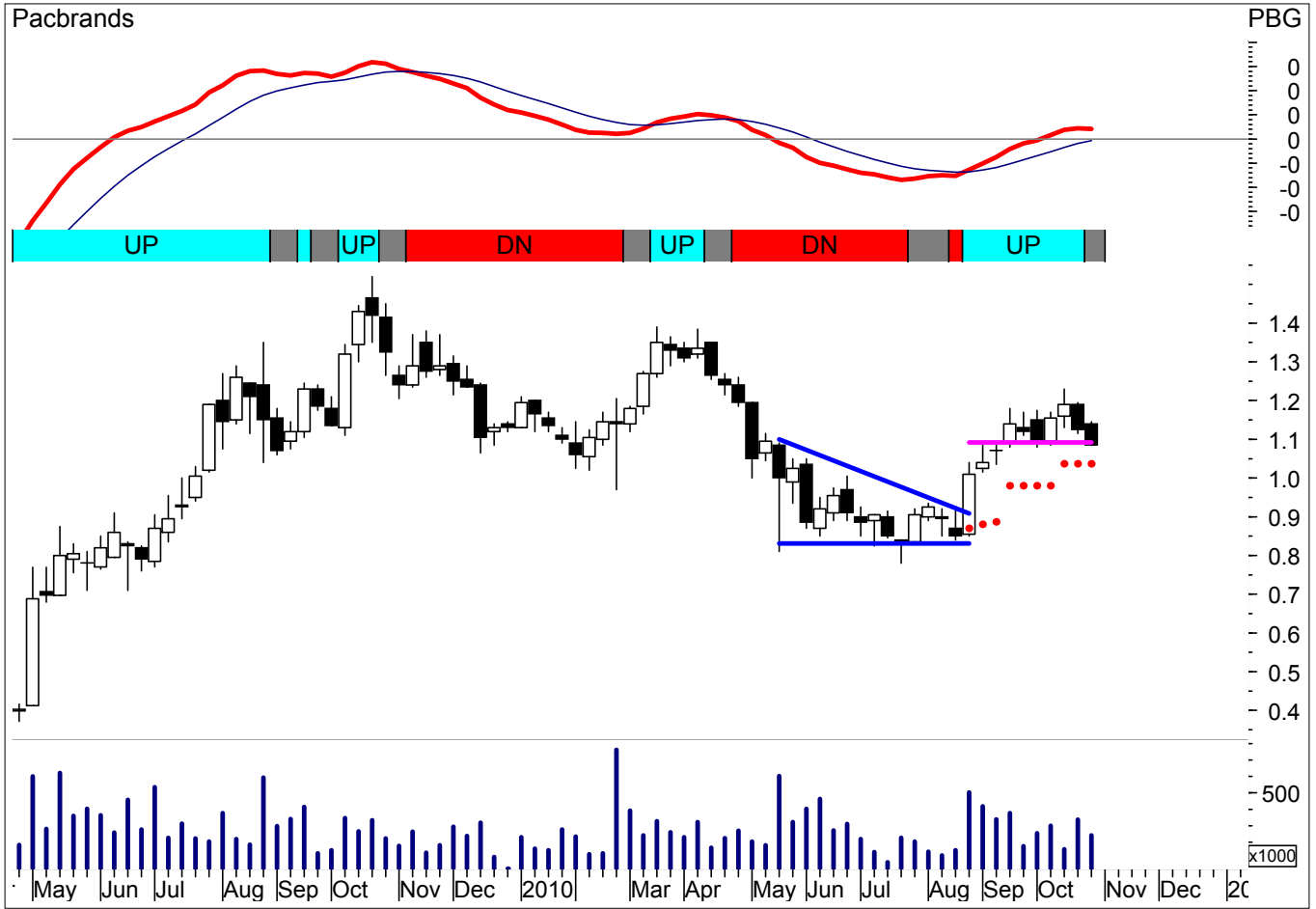
Long Trades in Progress



Long Trades in Progress



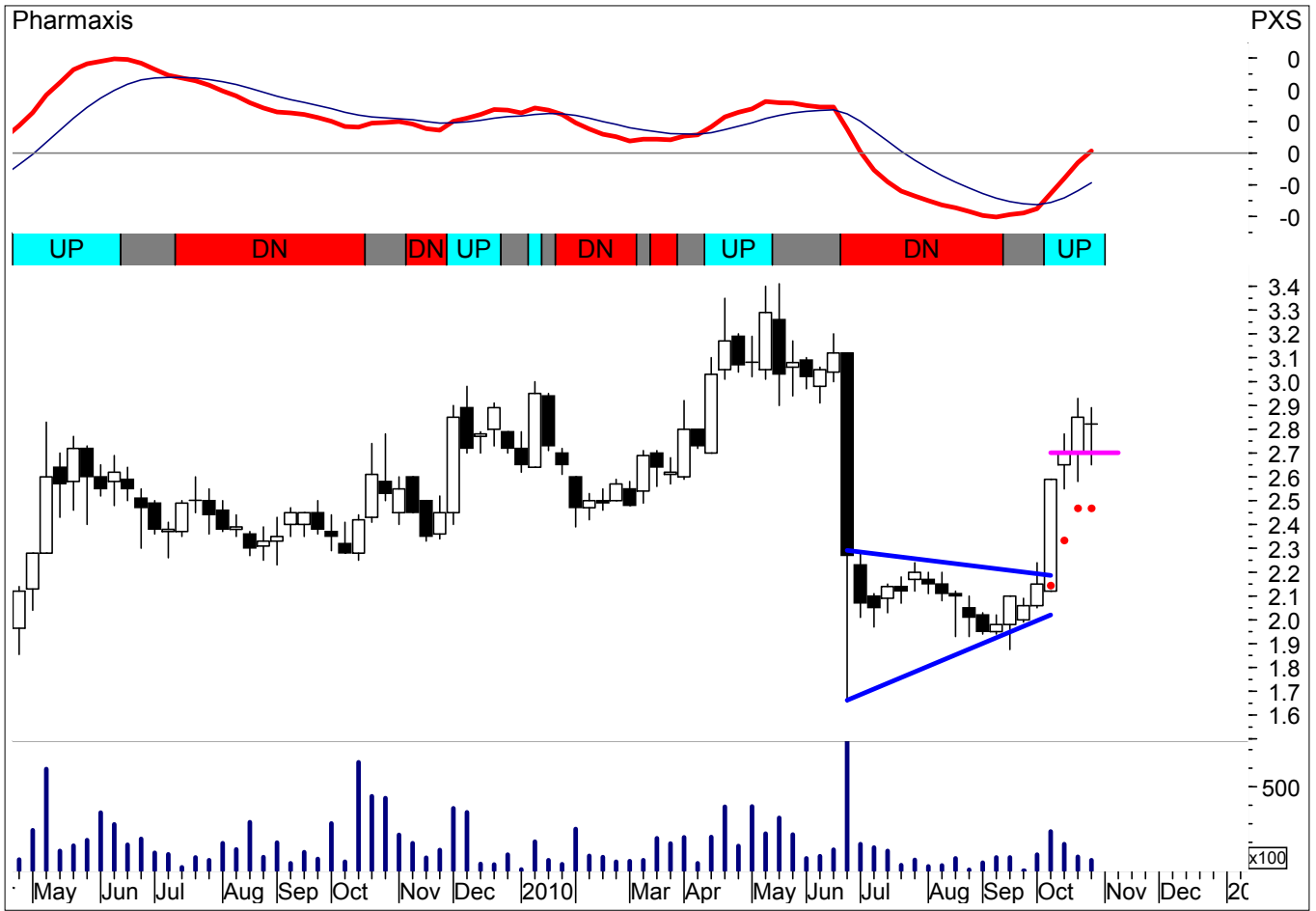
Long Trades in Progress



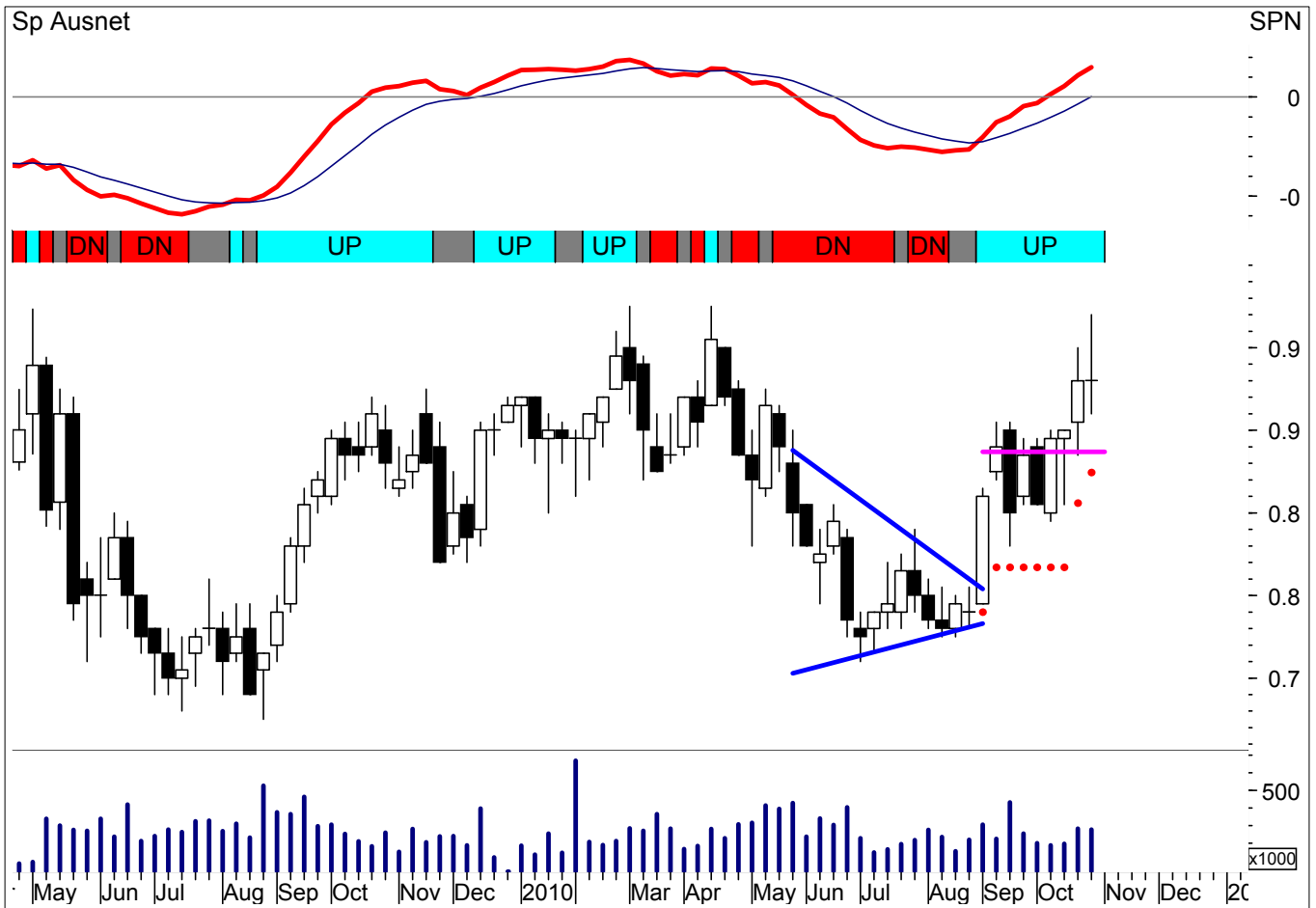
Long Trades in Progress



Long Trades in Progress



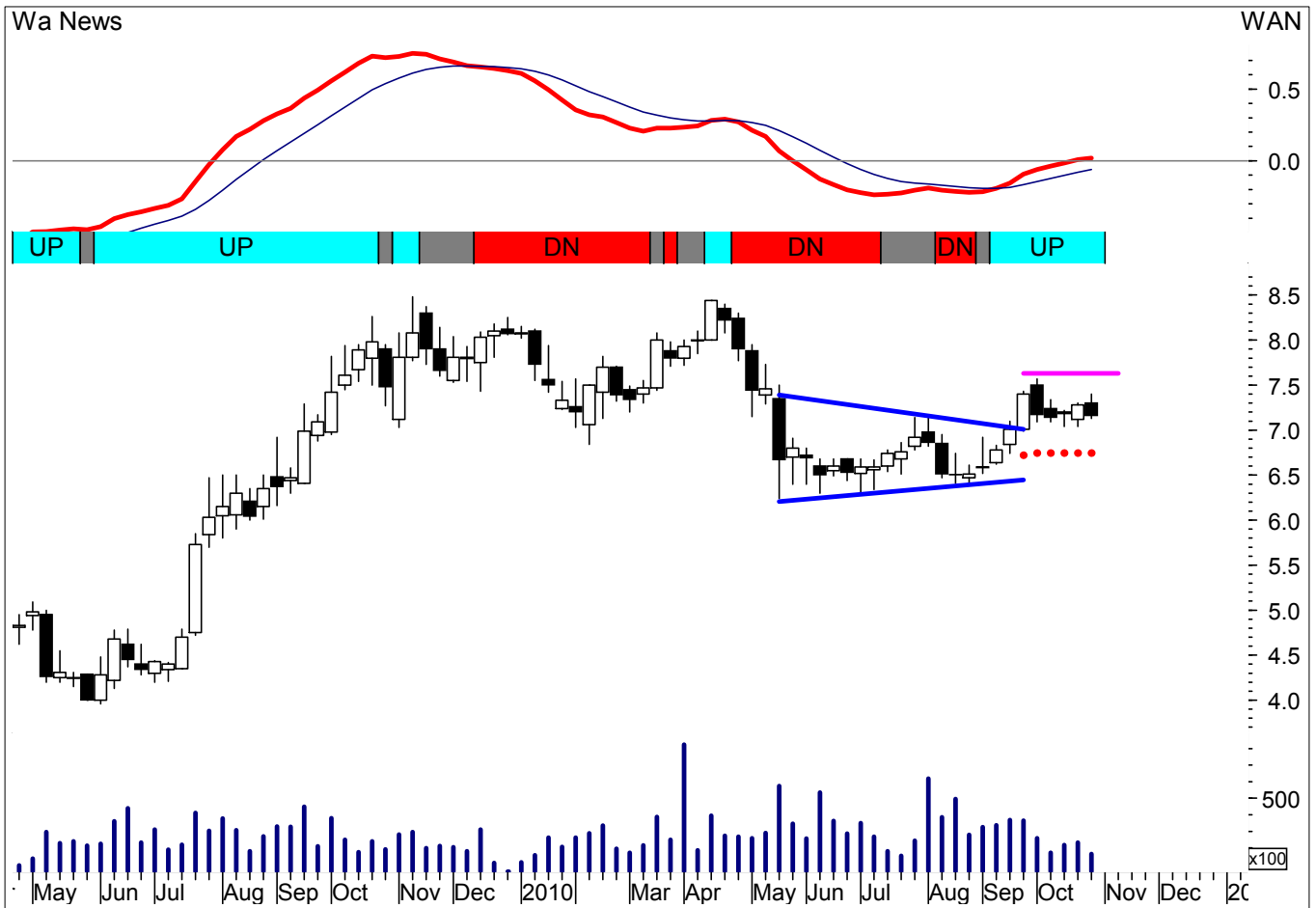
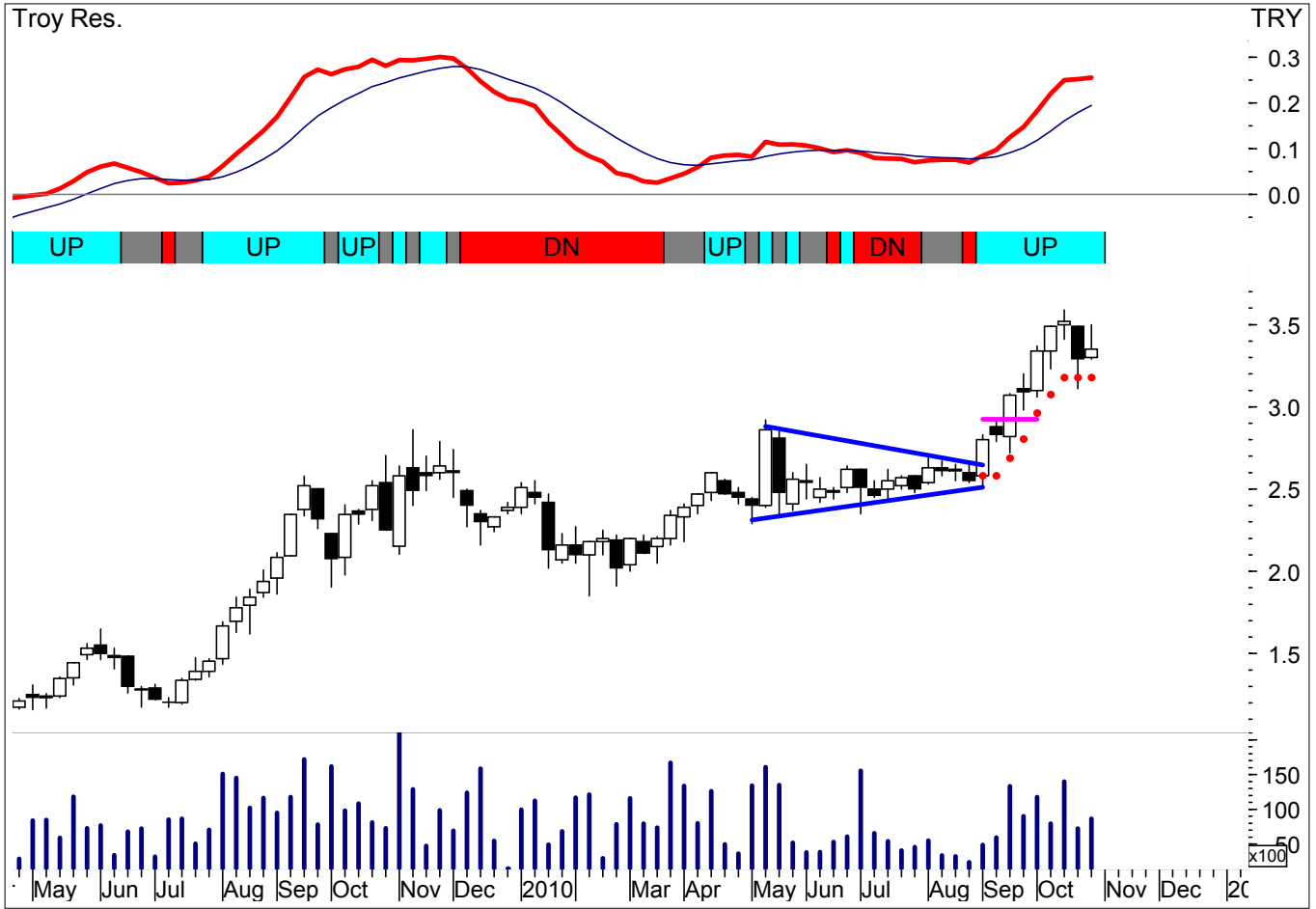
Long Trades in Progress



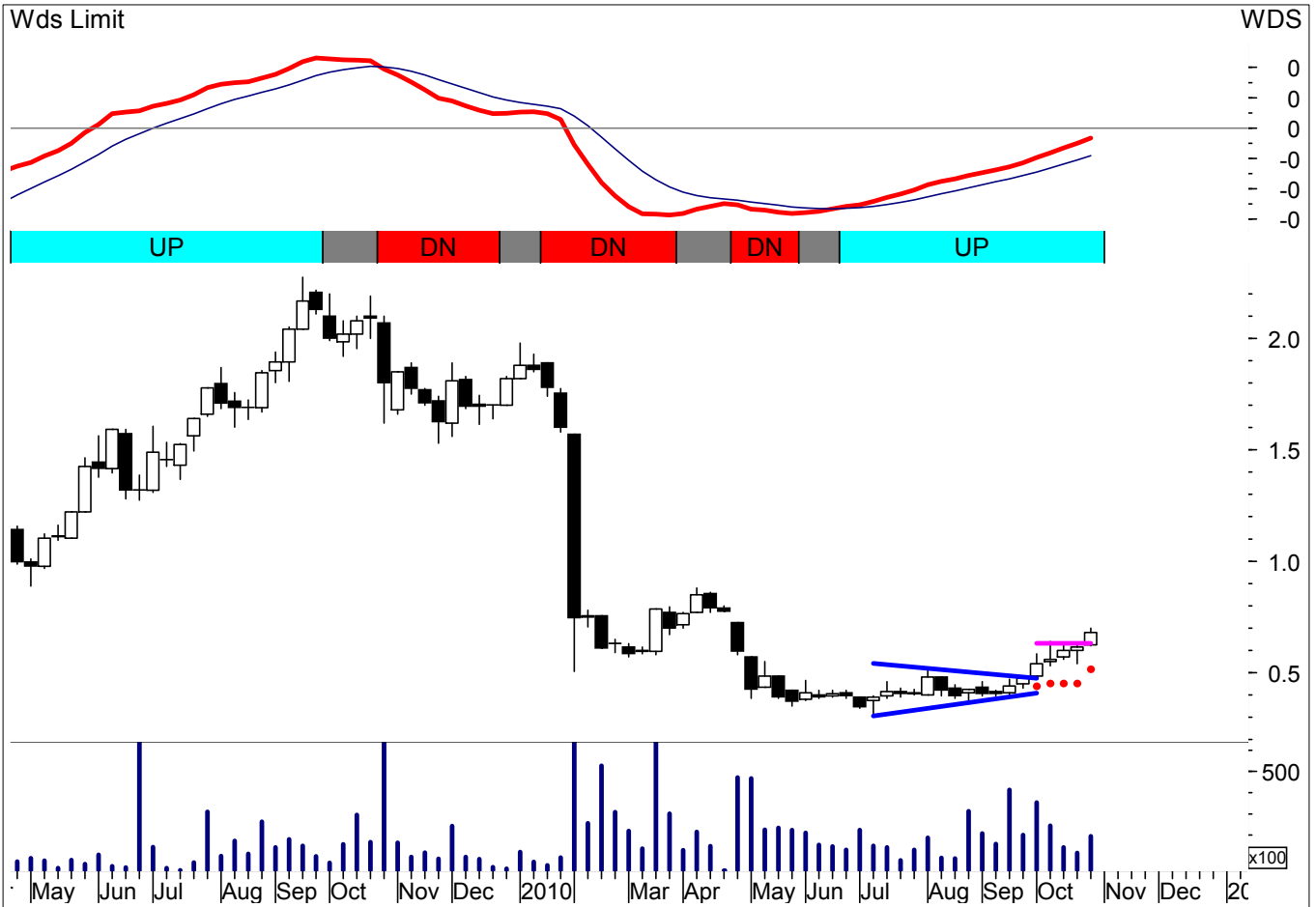
Long Trades in Progress



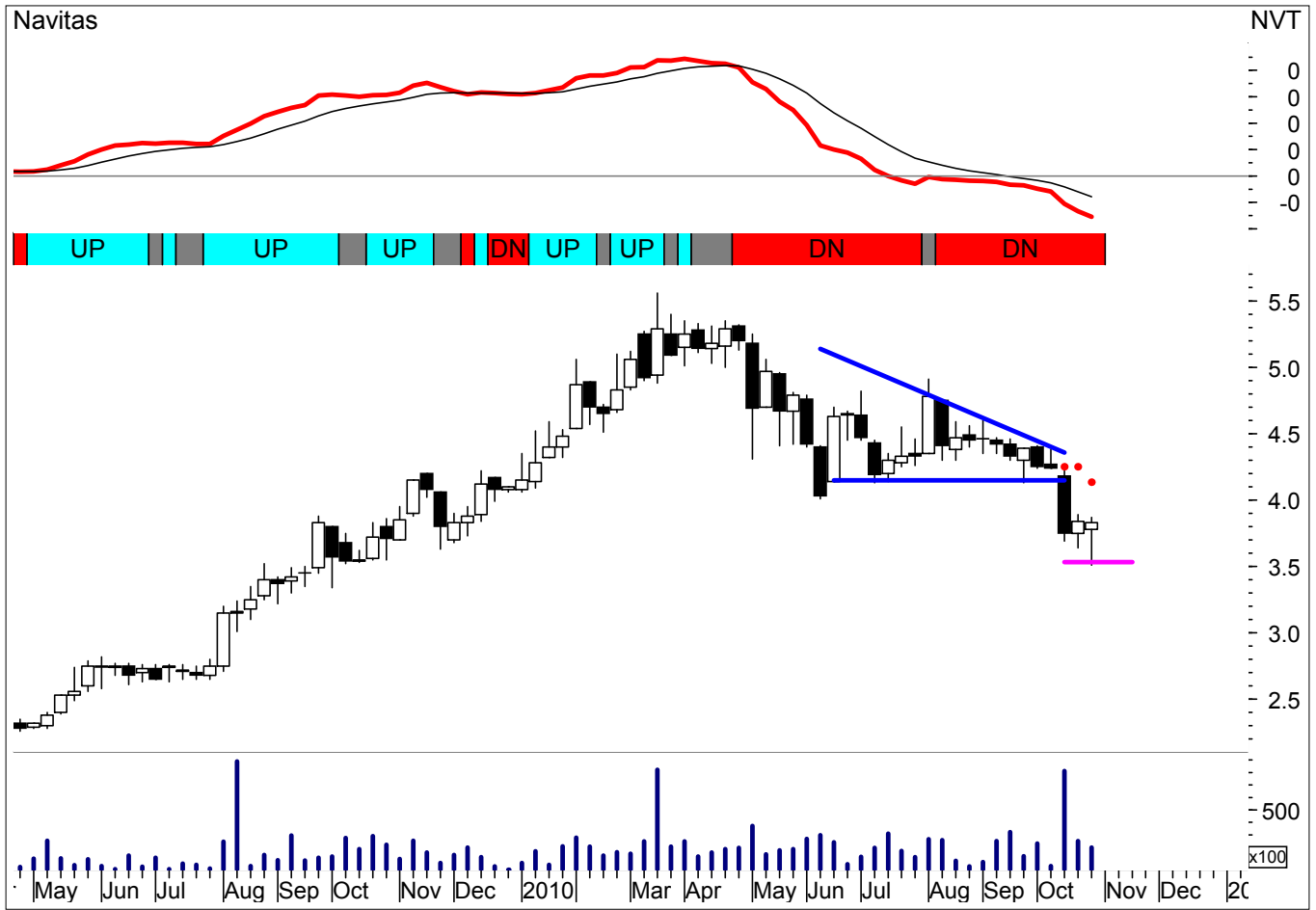
Long Trades in Progress



Long Trades in Progress



Short Trades in Progress



Data Tables

- ‘Exit’** = Exit this share in the following week if you hold it.
‘Hold’ = Hold this share if you have a position in this share.
‘Check Entry’ = You may be able to enter this share. But you will need to check that you can get a price between the Stop Loss and the Entry Limit.

Long Trades

<i>Share Code</i>	<i>Trade Type</i>	<i>Closing Price(\$)</i>	<i>Entry Limit(\$)</i>	<i>Stop Loss(\$)</i>	<i>MACD Direction</i>	<i>%Portfolio</i>	<i>Action</i>
ABC	Breakout	3.580	3.115	3.294	Up		Hold
AGO	Breakout	2.510	2.671	2.293	Up	16%	Check Entry
AJL	Breakout	2.390	2.625	1.999	Up	9%	Check Entry
ANZ	Breakout	24.810	25.594	23.850	Up	20%	Check Entry
API	Breakout	0.515	0.499	0.485	Up	20%	Check Entry
ASL	Breakout	2.390	2.058	2.119	Up		Hold
ASX	Breakout	37.100	33.420	40.051	Up		Exit
BLY	Breakout	3.620	3.851	3.292	Up	15%	Check Entry
BMN	Breakout	0.505	0.504	0.419	Up	11%	Check Entry
CGF	Breakout	4.600	4.126	4.305	Up		Hold
DOM	Breakout	2.980	3.105	2.742	Up	18%	Check Entry
GDY	Breakout	0.590	0.632	0.520	Up	12%	Check Entry
GNC	Breakout	7.530	6.642	7.022	Up		Hold
GNS	Breakout	0.675	0.877	0.666	Up	13%	Check Entry
GXY	Breakout	1.465	1.515	1.288	Up	13%	Check Entry
HZN	Breakout	0.360	0.359	0.315	Up	15%	Check Entry
IAU	Breakout	1.655	0.672	1.590	Up		Hold
IDL	Breakout	0.460	0.433	0.417	Up	20%	Check Entry
IGO	2ndWave	7.000	5.970	6.310	Up		Hold
JML	Breakout	0.560	0.407	0.556	Up		Hold
KAR	Breakout	9.360	8.230	9.279	Up		Hold
KZL	Breakout	0.760	0.860	0.670	Up	10%	Check Entry
LYC	Breakout	1.465	0.738	1.541	Down		Exit
MGX	Breakout	2.020	2.174	1.850	Up	15%	Check Entry
MRU	Breakout	5.800	5.462	5.058	Up	20%	Check Entry
NWH	Breakout	1.780	1.391	1.513	Up		Hold

PBG	Breakout	1.085	1.092	1.037	Down		Exit
PDN	Breakout	4.100	4.336	3.786	Up	17%	Check Entry
PEM	Breakout	0.540	0.552	0.479	Up	15%	Check Entry
PNA	Breakout	0.745	0.598	0.743	Up		Hold
PXS	Breakout	2.820	2.701	2.468	Up	20%	Check Entry
SLX	Breakout	5.240	5.685	4.570	Up	11%	Check Entry
SPN	Breakout	0.930	0.887	0.874	Up	20%	Check Entry
SUL	Breakout	6.670	6.252	6.109	Up	20%	Check Entry
TPI	Breakout	1.230	1.256	1.203	Up	20%	Check Entry
TRS	Breakout	18.400	18.216	17.330	Up	20%	Check Entry
TRY	Breakout	3.350	2.925	3.179	Up		Hold
WAN	Breakout	7.160	7.628	6.746	Up	20%	Check Entry
WDS	Breakout	0.680	0.632	0.515	Up	10%	Check Entry
WHC	Breakout	6.960	7.235	6.350	Up	17%	Check Entry
WTP	Breakout	1.665	1.557	1.518	Up	20%	Check Entry

Short Trades

<i>Share Code</i>	<i>Trade Type</i>	<i>Closing Price(\$)</i>	<i>Entry Limit(\$)</i>	<i>Stop Loss(\$)</i>	<i>MACD Direction</i>	<i>%Portfolio</i>	<i>Action</i>
AIO	Breakout	1.565	1.476	1.670	Down	18%	Check Entry
CRG	Breakout	7.580	7.335	8.200	Down	18%	Check Entry
NVT	Breakout	3.830	3.534	4.134	Down	15%	Check Entry